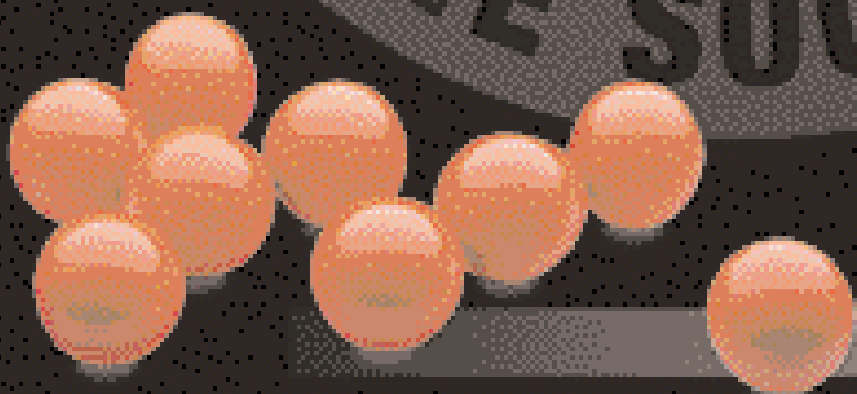


# ic INTRACOM<sup>®</sup>

DYNAMIC IDEAS FOR COMPUTERS

FOURTH QUARTER, 2004  
IMPORTER PRODUCT GUIDE  
**\$20.00 USD**



[www.icintracom.com](http://www.icintracom.com)

**Everything You Need To Put The Profit  
Back Into Your PC Business!™**

**The Smart Choice  
For All Your Network Solutions!™**

Keyboards  
Mice  
Speakers  
Hubs  
Power Protection  
PC Components  
Cases  
CPU Coolers  
PC Cards  
Retail Packed Cables  
Data Switches  
Cleaning Products  
Desk Organization  
Media Storage  
Mouse Pads  
Mobile Computing

Network Cards  
Switches  
Wireless  
Gigabit  
Routers  
Media Converters  
KVM Switches  
Network IP Cameras  
Patch Cables  
Bulk Wire  
Modular Hardware  
Patch Panels  
Cabinets & Racks  
Wall Plates  
Cable Management  
Tools



***Lifetime  
Warranty  
Equals  
Guaranteed  
Satisfaction!***



**ic INTRACOM**<sup>®</sup>  
DYNAMIC IDEAS FOR COMPUTERS  
[www.icintracom.com](http://www.icintracom.com)

IC INTRACOM -  
Proud Manufacturer and Marketer of MANHATTAN® and  
INTELLINET ACTIVE NETWORKING®

IC INTRACOM® specializes in providing a complete range of PC components and networking equipment to distributors worldwide. The initial idea behind founding IC INTRACOM back in 1987 is still valid today, and will be for many years to come: combine intimate knowledge of the requirements of the consumer market with an in-depth understanding of Far East manufacturing.

This unique business model allows for rapid response to changing market demands through company-owned and ISO-certified factories and R&D departments located in Asia, the USA and Europe. Direct sales out of Asia are processed by IC INTRACOM's experienced 50-people-strong export division located in Taipei, Taiwan.



Once a product is designed, manufactured and has passed stringent quality control procedures, IC INTRACOM Asia ships to our customers all around the globe. Should you require faster delivery, or your business is not quite ready to receive direct shipments from Asia, we also maintain significant inventories at our Master Distribution Centers located in Argentina, Belgium, Germany, Italy, Mexico, Poland, Spain, Turkey, the United Kingdom, Uruguay and the USA. So wherever you are, IC INTRACOM products are always nearby, ready to deliver.

Please let us know how we can help you meet your business goals. We will always do our very best to ensure your continued success.

#### AMERICAS

Customer Service .....(52) 55-5899-6630  
Fax .....(52) 55-5899-6633  
E-mail .....ventas@icintracom.com.mx

#### AFRICA, ASIA PACIFIC & THE MIDDLE EAST

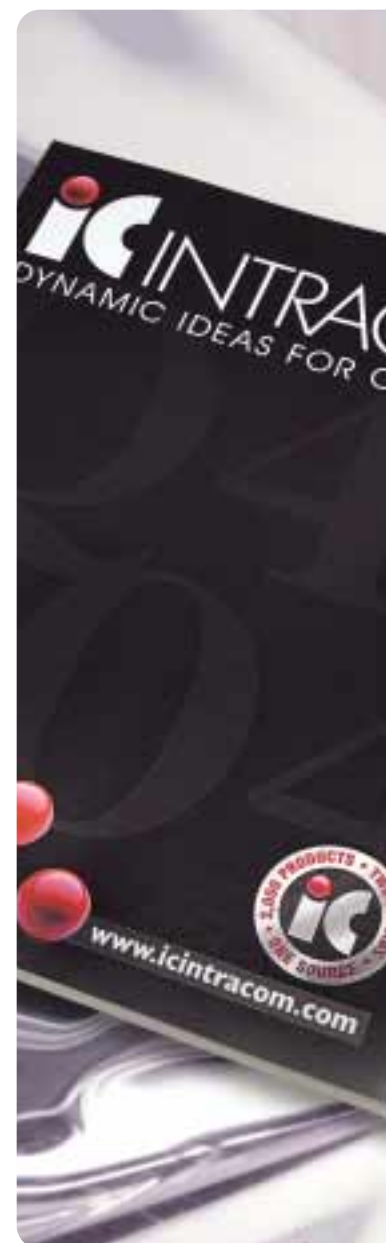
Customer Service .....(886) 2-8692-6599  
Fax .....(886) 2-8692-6799  
E-mail .....sales@icintracom.com.tw

#### EUROPE & NORTH AFRICA

Customer Service .....(49) 2353-700-7-300  
Fax .....(49) 2353-700-7-399  
E-mail .....info@ic-intracom.com

**MANHATTAN**  
FINEST QUALITY COMPUTER PRODUCTS

**INTELLINET**  
ACTIVE NETWORKING



**LIFETIME WARRANTY = GUARANTEED SATISFACTION!**

**FireFly Lighted Keyboard**

Pg.27


**Bluetooth Optical Mini Mouse**

Pg.33


**Easy Dock Multi-Port Docking Station**

Pg.25


**Extreme Gaming Stereo Headset**

Pg.39


**PCI SATA 150 RAID Controller Card**

Pg.42


**Illuminated USB 2.0 A to B Cable**

Pg.63


**CD/DVD Case**

Pg.98


**Union Station Notebook Case™**

Pg.92


**16-59 PC COMPONENTS & PERIPHERALS**

30	Barcode Scanners	56-59	Power Protection
47	Card Readers	54	Power Supplies
50,51	Case Modifications	13-15	Retail Advantage
48,49	Cases	42,43	SATA Controllers
41-43	Controller Cards	43	Serial ATA Power Cable
52,53	CPU Coolers	45	Serial Cards
55	Docking Kits	57	Surge Protection
18,19	External Drive Enclosures	59	UPS
46	FireWire Cards	40	USB 2.0 Cards
26	Fun!Cam	20	USB 2.0 Hubs
29	Graphics Tablet	40	USB 2.0 Products
36-39	Headsets	24	USB Adapters
46	Illuminated FireWire Cables	23	USB Converters
27-29	Keyboards	21	USB Hubs
29,32,33	Mice	20-31	USB Peripherals
45	Modems	23	USB Printer Cable
54	Mounting Kits	24	USB Sync-Box
36-39	Multimedia	31	Video Grabber
34-36	Multimedia Speakers Systems	26	Webcams
44	Parallel Cards		

**60-89 CABLES & DATA COMMUNICATIONS**

80	Adapter Cables	64	Monitor Adapters
65	Audio Cables	64,76	Monitor Adapters
74-86	Bagged Cables	64,77	Monitor Cables
62	Cable Program	80	Null Modem Adapters
65	CD-Rom Audio Cable	71,80	Null Modem Cables
87-89	Converters	68	Patch Cables
79	Data Cables	67,71,83	Power Cables
87,88	Data Switches	70,78	Printer Cables
76	DVI Cables	68,81	PS/2 Adapters
87	Extenders	62-73	Retail Packaged Cables
69	Firewire Cables	66,67,85	Ribbon Cables
68,81,82	Gender Changers	66,84,85	Round Cables
63	Illuminated USB Cables	12	Retail Advantage
68,81	Keyboard Adapters	86	SCSI Adapters
71,81	Keyboard Cables	73,86	SCSI Cables
72,80	Laplink Cables	65	S-Video Cables
63,67	Lighted Cables	83	Spider Cables
89	Line Extender Kit	83	3-in-1 Cables
82	MiDi Cables	63,74,75	USB Cables
71,72	Modem Cables	88	Video Splitters

**90-105 OFFICE ACCESSORIES**

103	Anti-Static Products	97	Mobile Computing Accessories
94	Camera Cases	101	Monitor Arms
102	CD Labeling Kit	100	Monitor Filters
98	CD Storage	104,105	Mouse Pads
102	CD/DVD Shredders	97	Notebook Alarms
99	Cleaning Products	92-95	Notebook Cases
92-95	Computer Bags	96	Notebook Cooling Pad
101	CPU Stands	97	Notebook Security Lock
100	Desktop Organizers	14	Retail Advantage
98	Diskette Storage	103	Tool Kits
102	Dust Covers	96	USB Flex Light
98	DVD Storage	96	USB Travel Cam
101	Keyboard Drawers		



**Managed Modular Switch**

Pg. 108



**Wireless Super G Access Point**

Pg. 121



**Network Attached Storage Device**

Pg. 135



**2-Port Mini KVM Switch with Integrated Cables**

Pg. 125



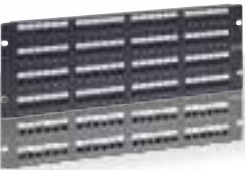
**Network IP Camera**

Pg. 127



**Cat5e Patch Panel**

Pg. 144



**LC/LC Fiber Optic Patch Cable**

Pg. 163



**Unshielded Twisted-Pair Patch Cable (UTP) Cat6**

Pg. 167



**106-135 ACTIVE NETWORKING**

130	<b>10/100/1000 Switches</b>	126	<b>Modems</b>
126	<b>ADSL Internet Modem Routers</b>	135	<b>Network Attached Storage</b>
123	<b>Antenna Cable</b>	116,133	<b>Network Cards</b>
122	<b>Antennas</b>	127,128	<b>Network IP Camera</b>
131	<b>Desktop Switches</b>	128,129	<b>Network IP Camera Accessories</b>
131	<b>DSL/Cable Modem Router</b>	126	<b>Print Servers</b>
132	<b>Ethernet Adapters</b>	113	<b>Rackmount Switches</b>
114	<b>Ethernet Media Converters</b>	13-14	<b>Retail Advantage</b>
117,132	<b>Gigabit Cards</b>	111,130	<b>Smart Switches</b>
110	<b>Gigabit Switches</b>	134,135	<b>SOHO Servers</b>
124,125	<b>KVM Switches</b>	131	<b>SOHO Switches</b>
108,109	<b>Managed Switches</b>	126	<b>USB Print Servers</b>
114-115	<b>Media Converters</b>	118-123	<b>Wireless Networking</b>

**136-168 PASSIVE NETWORKING**

154,155	<b>Bulk Wire</b>	141	<b>Open Racks</b>
138,139,146	<b>Cabinets</b>	165-167	<b>Patch Cables</b>
153	<b>Cable Boots</b>	144-148	<b>Patch Panels</b>
156,157	<b>Cable Testers</b>	149	<b>Raceway</b>
165,166	<b>Cat5e Patch Cables</b>	12	<b>Retail Advantage</b>
144,147	<b>Cat5e Patch Panels</b>	142	<b>Shelves</b>
165,167	<b>Cat6 Patch Cables</b>	150	<b>Surface Mount Boxes</b>
145, 147	<b>Cat6 Patch Panels</b>	158	<b>Tool Kits</b>
155	<b>Coax Connectors</b>	159-161	<b>Tools</b>
164	<b>Fiber Optic Adapters</b>	150	<b>Wall Boxes</b>
162,163	<b>Fiber Optic Patch Cables</b>	140	<b>Wall Mount Cabinets</b>
164	<b>Fiber Patch Panels</b>	151	<b>Wall Plates</b>
143	<b>Keyboard Tray</b>	143,161	<b>Wire Managers</b>
148,152	<b>Keystone Jacks</b>		
148	<b>Mini Rack</b>		
164	<b>Modular Cables</b>		
153,154	<b>Modular Plugs</b>		

**4000 Series 6-Piece Home Theater Speaker System**

Pg. 34



## Why IC INTRACOM?



**The Ultimate Success  
of Any Computer Reseller  
Operation Depends on  
Three Simple Factors!**



### **HARDWARE**

A *LOW MARGIN* opportunity and the smallest part of retail inventory.

### **SOFTWARE**

A *MEDIUM MARGIN* opportunity and the smaller part of retail inventory.

### **IC INTRACOM PRODUCTS**

*THE HIGHEST MARGIN* opportunity and the largest part of retail inventory.

Since its beginning in 1987, IC INTRACOM has successfully employed a unique business model to meet the needs of independent PC retailers, VARs and systems integrators worldwide. The key to our success is a time-tested seven-point value proposition that IC INTRACOM delivers to each and every customer:

### **1. Dedicated to the Independent Reseller**

More than just top quality product, we cater exclusively to the needs of the independent PC reseller and system integrator. Our 2,000+ products are not sold through mass merchandisers, giving you a truly unique and proprietary product offering.

### **2. High Margins**

We do not manufacture PCs or software. Instead, our focus is on ALL of the other computer-related products the reseller depends on to make a profit. When you adopt the IC INTRACOM concept, you will achieve an overall gross profit of at least 40%

### **3. Expert Selection**

Every item in our line has been carefully chosen to meet the needs of both you and your customers. We've already done all of the product and market research for you, eliminating the guesswork in deciding what and how much to stock. This saves valuable time and money freeing you to concentrate on other critical aspects of your business.

### **4. Attractive Retail Packaging**

Award-winning designs deliver maximum impact at the point of purchase, resulting in increased sales and a professional retail environment. At IC INTRACOM, we do more than make quality products. Our packaging staff knows what stands out, the information that is most important to end users, and the types of packages that have the most appeal. That experience goes to work for each IC INTRACOM reseller every time a customer walks through the door. Our years of expertise results in your immediate success! Uniform design standards lend a consistency and perception of value not only to our products, but also to our customers' operations. IC INTRACOM goes the extra mile to develop the industry's most compelling, visually appealing packaging so you can present your products with pride.



## 5. Powerful Brand Recognition

MANHATTAN and INTELLINET ACTIVE NETWORKING, two well-known and respected names, support more than 2,000 different items, far more than anyone in the industry.



The MANHATTAN brand adds significant profit to every computer sale and includes the latest and most popular components, peripherals, cables, and accessories; everything your customer needs to complement their hardware and software purchases. High quality, professionally packaged MANHATTAN products enhance your store's image while improving your bottom-line.



A broad and comprehensive collection of high quality networking solutions provides everything you need to round out your reseller operation. Offering a precise mix of the latest technologies, you can count on INTELLINET ACTIVE NETWORKING products to enhance customer satisfaction and make you their computer vendor of choice.

## 6. Experienced Technical Support

A highly trained team of professionals is standing by, ready to assist you both before and after the sale. In addition, a comprehensive Internet support site, containing the latest product drivers, firmware updates, and a wealth of other technical information, is available 24 hours a day, seven days a week. We even go a step further, offering two websites, [www.manhattan-support.com](http://www.manhattan-support.com) and [www.intellinet-network.com](http://www.intellinet-network.com), to provide a direct avenue of support for your customers. These sites include drivers, a list of Hot Topics, FAQs and a form for requesting technical support directly from us.

## 7. Lifetime Warranty

Company owned, ISO 9000 certified factories and strict manufacturing standards assure the highest quality in MANHATTAN and INTELLINET ACTIVE NETWORKING product. All items carry a full lifetime warranty, the strongest quality commitment anyone can make. We proudly stand behind our products and guarantee you can do the same.



"IC INTRACOM has everything I need to offset the lower profit side of my business. Well done!"

— Auckland,  
New Zealand



## Distributor Partner Program

IC INTRACOM has assembled one of the top partner programs in the industry, all provided at no charge to our distributors. Contact your dedicated account representative for more information.



- **Hot Products Mailer**

Customized with your language and pricing, this 40-page flyer makes an excellent mass mailer and prospecting tool.

- **Customized Product Catalogs**

For use by your existing customer base as a reference tool to the entire product line.

- **Stocking Level and Product Mix Consulting**

- **Import Training**

- **Stock Rotation**

- **Broad Product Range**

More Than 2,000 Professionally Branded and Packaged Products.

- **Your Choice of Shipping**

Either direct from Asia or from one of our Master Distribution Centers depending on your business needs.

- **Product Specific Marketing, Sales, Technical and Logistical Support**

- **Dedicated Account Representatives**

- **International Marketing Efforts**

Generate leads which are immediately forwarded to our Distribution Partners.

- **24-Hour Technical Support**



*IC INTRACOM's compelling 240-item cable wall consists of 39 high-demand items and requires only 4 by 4 feet of wall space.*





## **Serving The Needs Of More Than 40,000 Resellers In Over 90 Countries Worldwide!**

High-volume, ISO certified and UL approved manufacturing facilities in the USA, Europe and Asia, combined with a global network of master distribution centers, enable us to deliver your products in the shortest possible time and at the lowest cost.



## **How To Buy**

At IC INTRACOM, a team of knowledgeable customer support representatives is standing by, ready to help you with your order. Our skilled staff is fully trained on all products as well as on how to optimize your business through product mix consulting. Moreover, you can access our full-service website anytime, day or night.

## **Only from IC INTRACOM**

Where else can you purchase a complete line of more than 2,000 of the industry's most popular, high margin products? All professionally packaged under two powerful brands? With complete technical support and a full lifetime warranty? These attributes combine to make IC INTRACOM the proud partner of more than 40,000 PC retailers, VARs and systems integrators around the world.



**Making You Successful Is Our Primary Goal.**

**Call Today Or Visit Us Anytime At  
[www.icintracom.com](http://www.icintracom.com).**



## International Trade, Consulting & Manufacturing Bridging the Gap Between Two Worlds

**W**ith these changing times, the most successful companies look ahead and continuously adjust the way they do business. Developing an expert relationship with Asia is often a key strategy for improving profitability.

Regardless of product or industry, IC INTRACOM builds bridges between the industrial advantages of the Far East and the market needs of the Western world. Our strategy is based on establishing and cultivating partnerships between mid-sized domestic companies and Asian manufacturers.

We are firmly established in the Asian marketplace, and many of our customers are benefiting from that experience. You can too, if you plan to manufacture in the Far East, need components for your domestic production or intend to trade products. Just choose the program that provides the level of support you require.

**IC INTRACOM offers the experience and expertise to meet any OEM requirements**

### PROGRAM I Consulting and Negotiation

On your behalf, we investigate if the product you need is already available, or if it can be manufactured for you. Quite often, we suggest choosing alternative products and/or business opportunities.

#### PROGRAM I Consulting and Negotiation



• Services included in Program I

**IC INTRACOM builds bridges between the industrial advantages of the Far East and the market needs of the Western world. Our strategy is based on establishing and cultivating partnerships between domestic companies and Asian manufacturers.**



## PROGRAM II

### Full Service

More than just negotiation, you need assistance with quality control, administrative procedures, shipping and dealing with customs authorities. IC INTRACOM provides training in import business and financing. We manage your visits to the Far East, and our trained personnel can even accompany you if requested.



## PROGRAM III

### Single-Source Supplier

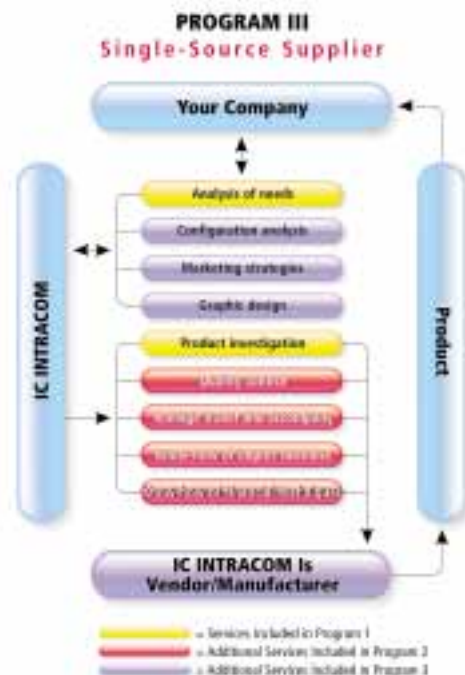
Your company utilizes IC INTRACOM's fully developed company infrastructure, which is adapted to the specific needs of the Far East markets, including our own manufacturing facilities. IC INTRACOM manufactures on your behalf and follows your standards.

### Shipping and Storage

Also, we supply in-between storage in Asia, consolidate shipping, provide storage areas in Europe and the Americas and, in addition, handle decentralized, direct shipping to your customers.

### Communication

Regardless of the program you select, IC INTRACOM offers ease of communication, availability 24/7, and professional contacts in Asia with fluency in English, German, Spanish, Italian and Mandarin.



## Worldwide Manufacturer of OEM Cable

All Custom Cables are designed and built in company-owned, ISO certified and UL approved manufacturing plants located in both the United States and China. More than 1,000 highly trained employees stand behind our Lifetime Guarantee of quality workmanship and materials.



We specialize in helping you arrive at the optimum cable design for your application while keeping costs within budget. CAD drawings and critical path management reports keep you informed during every phase of the project including design, tooling, prototype, first article acceptance and full scale production. Our high-volume production capabilities ensure meeting your delivery dates on time and on budget.

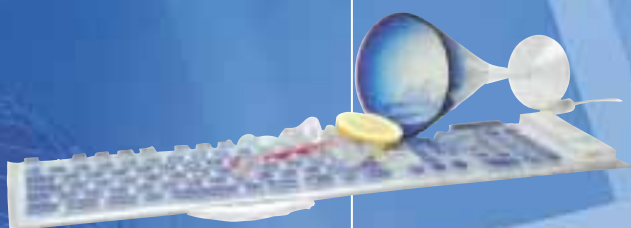
An extensive inventory of over 700 molds enable us to produce all industry standard cables as well as scores of custom designs. Plus, we specialize in quick tool turnaround at extremely competitive prices. In fact, we often ship first article samples directly from our USA manufacturing plant in as little as four business days from design approval.

We have the experience and expertise to meet and exceed any OEM cable requirement. Take advantage by allowing us the opportunity to quote your next custom cable order.





# Everything You Need to Put the Profit Back Into Your PC Business!™



## FireFly Moisture Proof Lighted Keyboard

- Electro-luminescent technology plus hermetically-sealed silicon casing
- Impervious to spills, grease and dirt simply wipes clean
- Ideal for low-light and night environments
- The perfect combination for bars, restaurants, health facilities, gaming, travel and more
- Rugged construction to withstand harsh conditions
- Flexible material rolls up for space-saving storage
- Precise and silent key action
- Flat design eliminates wrist fatigue
- Easily attaches to desktop, counter or walls

172668



## Easy-Dock Multi-Port Docking Station

- Connect/disconnect peripherals in a single step
- Four USB 2.0 ports
- 10/100 Ethernet port
- Serial port
- Two PS/2 ports (keyboard & mouse)
- LED status indicator on all ports
- Includes 4' USB 2.0 cable and AC adapter

172985



## PCMCIA SATA 150 2 Port Adapter

- Adds two fully compliant SATA 150 ports to any notebook
- 32 bit cardbus PC card
- Supports data rates of 1.5 Gbps
- Ideal for any SATA drive or storage device
- Windows 98/2000/Me/XP compliant

171786



## USB Bluetooth Adapter

- Adds Bluetooth wireless connectivity to a notebook or PC
- Compatible with all Bluetooth hardware peripherals
- USB 1.1 compliant
- Windows® 98/2000/Me/XP compatible

169745

**LIFETIME  
WARRANTY**



**MANHATTAN®**  
FINEST QUALITY COMPUTER PRODUCTS



# The Smart Choice For All Your Networking Solutions!™



## Network IP Camera

View Live, Full Motion Video Using Any Web Browser

### Essential Business Application Features Including -

- Embedded Operating System - Eliminates Dependence on Additional Servers
- Built-In Motion Detection and Recording Software
- Instant Event-Triggered E-mail Notification
- Multiple Log In - Supports up to 100 Users Simultaneously
- FTP Upload - Transmits Live Images to Any Web Page for Online Promotions
- Powerful Video Compression - Stores up to One Full Month of Video on a Typical PC
- Plug And Play - Quick & Easy 3-Step Setup

550710



## Wireless Super G Access Point

- Connects a wireless network to a traditional wired network
- 10/100 Mbps Fast Ethernet port
- Allows for greater distance between wireless PCs
- 10 times faster than 802.11b wireless
- Backward compatible with all 802.11b and g wireless products
- Simple Web Based Configuration
- LEDs for power, speed, 802.11b/g
- Supports Bridge Mode

522755



## 5 Port Metal 10/100/1000 Switch

- 10/100/1000 auto-sensing ports – automatically detect optimum network speed
- Supports any combination of 10, 100 or 1000 Mbps network devices
- Auto MDI-MDIX on every port
- Auto-detection of full/half duplex and flow control
- Store & forward switching method
- LEDs for power, link, 10/100/1000 and activity
- Address filtering on all ports
- Supports 8 k MAC addresses
- 2 Mbit buffer memory

523073



## Network Attached Storage

- Store files easily on a SOHO network
- Up to 200 GB storage
- UPNP
- Built-in DHCP client
- Easy to configure web interface

522991

**LIFETIME  
WARRANTY**

**INTELLINET**  
ACTIVE NETWORKING

## Retail Advantage

### Required Stocking Items For The Successful Independent Reseller



IC INTRACOM provides a broad range of more than 2,000 products. These include our best sellers, as well as hundreds of hard-to-find items. Naturally, we don't expect our customers to stock all products. However, we also know how difficult it may be in deciding which items to carry in inventory.

Through our many years of experience and regular interaction with tens of thousands of resellers, we have the unique ability to identify those critical items that our most successful customers keep in stock at all times. We have labeled these products "Retail Advantage". Purchasing "Retail Advantage" items removes any guesswork, saving you both time and money.

## MODULE I - COMPUTER CABLES

Includes 38 High-Demand Products, 240 Total Items

- Top Margin Producer
- Sharpen Your Store's Image
- Increase Your Cable Sales
- Informative Packaging for Easy Cable Identification
- Slide Card Blister for Easy Re-Packaging

	Qty.	Page		Qty.	Page
<b>USB 1.1 Cables</b>			<b>Data Cable DB9</b>		
<b>364362</b> USB A to B Cable, 1,9 m	12	p.63	<b>360098</b> DB9Male to DB9Female, 1,9 m	6	p.72
<b>364379</b> USB A to B Cable, 1,9 m	6	p.63	<b>360074</b> DB9Male to DB9Male, 1,9 m	6	p.72
<b>USB 2.0 Cables</b>			<b>Keyboard Adapter Cable</b>		
<b>364751</b> USB A to B Cable, 1,9 m	6	p.63	<b>362566</b> Mini-DIN6Male to DIN5Female, 0,15 m	6	p.68
<b>364744</b> USB A to B Cable, 1,9 m	6	p.63	<b>362559</b> Mini-DIN6Female to DIN5Male, 0,15 m	6	p.68
<b>IEEE 1394 Cables</b>			<b>Power Y Cable</b>		
<b>334068</b> 6 to 6 pin, 1,8 m	6	p.46	<b>360623</b> 2x5.25 F to 1x5.25 M, 0,20 m	6	p.67
<b>334259</b> 6 to 4 pin, 1,8 m	6	p.46	<b>364782</b> 2 x 5 in female to 1 x 5 in. male, 1,8 m	6	p.65
<b>334020</b> 6 to 6 pin, 1,8 m	6	p.46	<b>Audio Cable</b>		
<b>USB Printer Cable</b>			<b>364737</b> Dual Audio Cable, 0,60 m	6	p.65
<b>317474</b> USB IEEE Printer Cable, 1,9 m	6	p.70	<b>363600</b> Universal CD ROM Audio Cable, 0,45 m	6	p.65
<b>PS/2 Keyboard Cable</b>			<b>363617</b> CD Rom Audio Cable, MPC2 (Black) to MPC2 (Black), 0,45 m	6	p.65
<b>360180</b> Mini DIN 6 Male to Female, 1,9 m	6	p.71	<b>365444</b> RCA Plug, 3 x Cinch to 3 x Cinch, 1,8 m	6	p.65
<b>360173</b> Mini DIN 6 Male to Male, 1,9 m	6	p.71	<b>IDE/ Floppy Cable</b>		
<b>IEEE 1284 Printer Cable</b>			<b>334099</b> 3 connectors, 80 conductors, 0,60 m	6	p.66
<b>360197</b> DB25 Male to CEN 36 Male, 1,9 m	6	p.70	<b>364843</b> Round Floppy Cable, 3 Connector, 0,6 m	6	p.66
<b>360203</b> DB 25 Male to CEN 36 Male, 3,1 m	6	p.70	<b>365284</b> Ultra ATA 133 Round Cable, Grounding Wire, 3 Connector, 0,6 m	6	p.66
<b>Patch Cable with Molded Boot</b>			<b>363099</b> IDE Dual Drive, 0,40 m	6	p.67
<b>364577</b> RJ45 -RJ45, 2,0 m	12	p.68	<b>Adapter</b>		
<b>364591</b> RJ45 -RJ45, 4,0 m	6	p.68	<b>360395</b> AT-Adapter DB9 female to DB25 male	6	p.68
<b>Monitor Cable</b>			<b>360401</b> AT-Adapter DB9 female to DB25 female	6	p.68
<b>360586</b> HD 15 male to HD 15 female, 1,8 m	6	p.64	<b>Gender Changer</b>		
<b>360609</b> HD 15 male to HD 15 male, 1,8 m	6	p.64	<b>360357</b> DB9 male to male	6	p.68
<b>Data Cable DB25</b>			<b>360364</b> DB9 female to female	6	p.68
<b>360036</b> DB25Male to DB25Male, 1,9 m	6	p.70	<b>360371</b> DB25 male to male	6	p.68
<b>360050</b> DB25Male to DB25Female, 1,9 m	6	p.70	<b>360388</b> DB25 female to female	6	p.68

## MODULE 2 - KEYBOARDS/MICE/OTHER INPUT DEVICES

### Keyboards

Qty.	Page
<b>171588</b> Deluxe Multimedia Keyboard	3 p.28
<b>171595</b> Deluxe Multimedia Keyboard, Black	3 p.28
<b>337922</b> Multimedia Keyboard w/ Built-In 2 Port USB Hub	3 p.28
<b>171618</b> UBS-PS/2 Combo, White	4 p.29
<b>431637</b> Multimedia PS/2, Blue	4 p.29

### Mice

Qty.	Page
<b>169844</b> Scroll Mouse, PS/2, Black	6 p.32
<b>169851</b> Scroll Mouse, USB, Black	6 p.32
<b>167697</b> Optical Scroll Mouse, PS/2, Black	6 p.32
<b>171496</b> Optical Scroll Mouse, USB, Black	6 p.32
<b>171267</b> Wireless Optical ScrollBall Mouse	4 p.33
<b>169899</b> Mini Optical Scroll Mouse	6 p.32
<b>171069</b> Presentation Mouse	4 p.29

### Other Devices

Qty.	Page
<b>171878</b> Deluxe 3D Graphics Tablet	2 p.29
<b>169035</b> 3D Graphics Tablet	4 p.29
<b>169752</b> Bay Mount, 3.5" Panel, Beige	4 p.37
<b>170673</b> Bay Mount, 3.5" Panel, Black	4 p.37
<b>168595</b> Bay Mount, 5.25", Includes game port	4 p.37



## MODULE 3 - SPEAKERS & HEADSETS

Qty.	Page
<b>168762</b> 1000 Series Speaker System	10 p.35
<b>168779</b> 1100 Series Speaker System, Beige	10 p.35
<b>170529</b> 1100 Series Speaker System, Black	5 p.35
<b>168816</b> 3000 Series Speaker System	3 p.35
<b>168731</b> 3100 Series 3-Piece Multimedia Speaker System 3	p.34
<b>168809</b> 3200 Series 3-Piece Subwoofer Speaker System 3	p.34

Qty.	Page
<b>171199</b> RF Wireless Headphones	2 p.36



## MODULE 4 - ACTIVE NETWORKING

### NICs

Qty.	Page
<b>509510</b> PCI 10/100 Card, Realtek® Chipset	20 p.116
<b>520584</b> 10/100 Card, w/ Boot ROM, Via Chipset	20 p.116
<b>163989</b> 10/100 PCI Network Card with Wake-on LAN	10 p.116
<b>520522</b> PCMCIA 10/100 RJ45 Card, Dongleless	5 p.117
<b>205184</b> USB to 10/100 Mbps Ethernet Adapter	10 p.117
<b>205528</b> USB 2.0 to 10/100 Ethernet Adapter	5 p.117

### Switches

Qty.	Page
<b>512725</b> 5 Port 10/100 Ethernet Switch	6 p.131
<b>515221</b> 8 Port 10/100 Ethernet Switch	4 p.131
<b>523288</b> Internet Router with 4 Port Switch	6 p.131
<b>523301</b> 5 Port 10/100 Ethernet Switch, Metal	4 p.131
<b>523318</b> 8 Port 10/100 Ethernet Switch, Metal	4 p.131
<b>522304</b> 8 Port 10/100/1000 Desktop Gigabit Switch	2 p.130
<b>522595</b> 16 Port Compact Metal 10/100 Switch	4 p.131
<b>520508</b> 16 Port Desktop Smart Switch	2 p.130
<b>522298</b> 5 Port 10/100/1000 Desktop Gigabit Switch	4 p.130

### Wireless

Qty.	Page
<b>520614</b> Wireless PCMCIA Adapter, 11 Mbps	10 p.118
<b>521710</b> Wireless PCI Adapter, 11 Mbps	10 p.118
<b>523233</b> Intellinet Wireless 11B Router	10 p.119

### Media Converters

Qty.	Page
<b>519137</b> Ethernet Media Converter	10 p.115
<b>519038</b> Ethernet Media Converter	10 p.115
<b>506366</b> Ethernet Media Converter	10 p.114





## MODULE 5 - PC CLEANING

	Qty.	Page
<b>433730</b> Anti-Static Multi-Surface Cleaning Wipes 50 wet / 50 dry	10	p.99
<b>410250</b> Air Duster 9 oz can	10	p.99
<b>433242</b> PC Clean Anti-Static Monitor Screen Cleaner 8.5 fl. oz. (250 ml) Spray Pump	10	p.99
<b>433266</b> Wet/Dry Anti-Static Multi-Surface Cleaning Wipes 12 wet/12 dry	10	p.99
<b>433273</b> PC Clean Compact Disc Cleaning Wipes 100 Pre-Moistened Wipes	10	p.99
<b>433228</b> PC Clean Anti-Static Multi-Surface Cleaning Wipes 100 Pre-Moistened Wipes	10	p.99
<b>421737</b> CD-ROM Laser Lens Cleaner Disc	10	p.99
<b>433259</b> PC Clean Anti-Static Multi-Surface Cleaner 8.5 fl. oz. (250 ml) Spray Pump	10	p.99
<b>433310</b> PC Clean Disc Repair, 10-12 applications, 5 g	10	p.99



## MODULE 6 - CASE MODS

### Lights

	Qty.	Page
<b>169400</b> Cold Cathode Lamp, Sound Activated	5	p.50
<b>169417</b> Cold Cathode Lamp, Sound Activated	5	p.50
<b>169424</b> Cold Cathode Lamp, Sound Activated	5	p.50
<b>169943</b> Cold Cathode Lamp, Sound Activated	5	p.50
<b>172806</b> Cold Cathode Lamp	5	p.50
<b>172813</b> Cold Cathode Lamp	5	p.50
<b>172820</b> Cold Cathode Lamp	5	p.50
<b>172790</b> Cold Cathode Lamp	5	p.50
<b>172752</b> Dual Cold Cathode Lamp, Sound Activated	5	p.50
<b>172769</b> Dual Cold Cathode Lamp, Sound Activated	5	p.50
<b>172745</b> Dual Cold Cathode Lamp, Sound Activated	5	p.50
<b>172738</b> Dual Cold Cathode Lamp, Sound Activated	5	p.50
<b>172318</b> LED "Laser" Lamp, Blue	10	p.50
<b>172325</b> LED "Laser" Lamp, Green	10	p.50
<b>172301</b> LED "Laser" Lamp, Red	10	p.50
<b>172295</b> LED "Laser" Lamp, White	10	p.50
<b>172288</b> LED "Laser" Lamp, UV Light	10	p.50

### Case Fans

<b>701686</b> Case Fan 80 x 80 x 25 mm, Ball Bearing, Midnight Blue	5	p.51
<b>701679</b> Case Fan 80 x 80 x 25 mm, Ball Bearing, Cherry Red	5	p.51
<b>701709</b> Case Fan 80 x 80 x 25 mm, Ball Bearing, Rainbow	5	p.51
<b>701693</b> Case Fan 80 x 80 x 25 mm, Ball Bearing, Apple Green	5	p.51

### Cables

<b>170741</b> EL Cable Kit (Inverter and Cable), 5', Electric Blue	6	p.50
<b>170734</b> EL Cable Kit (Inverter and Cable), 5', Flaming Red	6	p.50
<b>170703</b> EL Cable Kit (Inverter and Cable), 5', Neon Green	6	p.50
<b>170710</b> EL Cable Kit (Inverter and Cable), 5', Blazing Yellow	6	p.50
<b>345262</b> Floppy Drive Round cable, 24 in, EL	6	p.51
<b>344760</b> ATA 133 Round cable, 36 in, EL	6	p.51
<b>344753</b> ATA 133 Round cable, 24 in, EL	6	p.51
<b>344746</b> ATA 133 Round cable, 18 in, EL	6	p.51
<b>344715</b> ATA 133 Round cable, 18 in, UV	6	p.51
<b>344722</b> ATA 133 Round cable, 24 in, UV	6	p.51
<b>344739</b> ATA 133 Round cable, 36 in, UV	6	p.51

### Qty. Page

<b>344708</b> Floppy Drive Round cable, 24 in, UV	6	p.51
<b>347969</b> USB 2.0 Cable Illuminated ends, Blue	6	p.63
<b>347983</b> USB 2.0 Cable Illuminated ends, Red	6	p.63
<b>365543</b> USB 2.0 Extension Cable, 6 ft., Red	6	p.63
<b>365529</b> USB 2.0 Extension Cable, 6 ft., Blue	6	p.63





**MODULE 7 - KVM SWITCHES**

	Qty.	Page
<b>I72127</b> 2-Port Mini KVM Switch with Integrated Cables	4	p.125
<b>I72110</b> 2-Port Mini KVM Switch with Integrated Cables	4	p.125
<b>I57896</b> 2 Port KVM Switch with built-in 3 Port USB hub	4	p.125
<b>I56745</b> 2 Port KVM Switch, includes cables	4	p.125
<b>I56752</b> 4 Port KVM Switch, includes cables	4	p.125
<b>I56721</b> 4 Port Desktop KVM Switch with OSD	4	p.124
<b>I56899</b> 8 Port Rack Mountable KVM Switch	2	p.124
<b>I57872</b> 3 Port PS/2, 4 Port USB Combo KVM Switch	4	p.125


**INTELLINET**  
 ACTIVE NETWORKING
**MODULE 8 - USB PRODUCTS**

	Qty.	Page
<b>I69745</b> Bluetooth USB Dongle	5	p.24
<b>I69318</b> 4 Port USB Slim Line 2.0 Hub	5	p.20
<b>I519694</b> USB 1.1 4-Port USB Hub/Switch (connect a notebook and home PC to your USB device)	5	p.21
<b>I516419</b> 4 Port USB 1.1 Compact Hub	5	p.21
<b>I364966</b> USB to PS/2 Y Adapter	10	p.23
<b>I363792</b> USB to USB Data Bridge	10	p.22
<b>I336581</b> USB to Parallel Converter	10	p.23
<b>I205146</b> USB to RS232 Converter Cable	10	p.23
<b>I64184</b> USB Video Grabber (Capture video to your PC)	5	p.31
<b>I57650</b> USB Video Grabber with Audio	5	p.31
<b>I71472</b> USB 2.0 Video Grabber	5	p.31

	Qty.	Page
<b>701525</b> Bay Mount 6-in-1 Universal Card Reader, USB	6	p.47
<b>701648</b> External 6-in-1 Universal Card Reader, USB	6	p.47
<b>701822</b> External 6-in-1 Universal Card Reader, USB 2.0	6	p.47


**MANHATTAN**  
 FINEST QUALITY COMPUTER PRODUCTS
**MODULE 9 - ADD-ON CARDS**

	Qty.	Page
<b>I67741</b> 2 Port USB 2.0 PCI Card	4	p.40
<b>I69011</b> 4 Port USB 2.0 PCI Card	4	p.40
<b>I516167</b> 2 Port USB 2.0 PCMCIA Card	4	p.40
<b>I339018</b> 5 Port USB 2.0 Kit – Adds / Upgrades Ports Front & Rear	4	p.40
<b>I67024</b> 3 Port FireWire® PCI Card	4	p.46
<b>I512411</b> FireWire® PCMCIA Card	4	p.46
<b>I65273</b> 2 Port Serial PCI Card	4	p.45
<b>I70376</b> Serial ATA 150 Controller Card	4	p.42
<b>I68700</b> PCI Ultra 133 Raid Controller Card	4	p.41
<b>I68694</b> ATA 133 PCI Controller Card	4	p.41
<b>I71519</b> 1 Port Serial PCMCIA Adapter	4	p.45
<b>I53577</b> 56K PCI Modem	4	p.45
<b>I55403</b> 56K PCMCIA Modem	4	p.45
<b>I324007</b> 1 Port Parallel PCI Card	4	p.44
<b>I65976</b> 1 Port Serial PCI Card	4	p.45



**MANHATTAN**  
 FINEST QUALITY COMPUTER PRODUCTS

## MANHATTAN Finest Quality Computer Products - The #1 choice for more than 40,000 resellers in over 90 countries worldwide!

- A full range of Components and Peripherals to satisfy the most demanding needs
- A broad selection of internal components for the system builder to utilize
- The very latest in exciting peripherals for adding on or upgrading
- All MANHATTAN products feature a Lifetime Warranty!

### PC Components

- 24 **Batteries**
- 41 **Cards**
- 48 **Cases**
- 52 **Cooling**
- 55 **Hard Drive Docking Kits**
- 45 **Modems**
- 54 **Power Supplies**

### PC Peripherals

- 34 **Audio**
- 27 **Keyboards**
- 29 **Mice**
- 47 **Card Readers**
- 20 **Hubs**
- 36 **Multimedia Control Panels**
- 18 **Drive Enclosures**
- 56 **Power Protection**
- 30 **Barcode Scanners**
- 22 **Bridges**
- 26 **Web Cameras**
- 22 **Adapters/Converters/Extenders**

### FireFly Lighted Keyboard

171939

Light up your desktop with this popular item, recently featured on CBS News, as well as in Computer Shopper and PC World.



## A complete range of PC Components & Peripherals to satisfy all your needs!



### Wireless Stereo Headphone

171199

Sound quality you won't believe, at a fraction of the cost of comparable products. Hear and feel the 20-20,000 Hz frequency response – then dare to compare!



### Bluetooth Mini Optical Mouse

171687

Compact size makes this item ideal for notebook computers, and it is compatible with all Bluetooth adapters.





## External Drive Enclosures

### Aluminum USB 2.0 External 2.5" Drive Enclosure



- Ideal for data storage, backups or transporting data
- USB 2.0 480 Mbps high speed data transfer
- Compatible with any 2.5 IDE Hard Drive
- Solid aluminum body for protection and excellent heat dissipation
- Shock reduction system
- Stackable design
- Carry Pouch included
- Windows 98/2000/Me/XP and Mac compatible
- Works with any USB computer
- USB cable and power adapter included

702065



### Aluminum USB 2.0 External 5.25" Drive Enclosure

- Ideal for data storage, backups or transporting data
- USB 2.0 480 Mbps high speed data transfer
- Compatible with any 5.25 IDE CD/CDRW/DVD Drive or 3.5 IDE hard drive
- Solid aluminum body for protection and excellent heat dissipation
- Shock reduction system
- Stackable design
- Windows 98/2000/Me/XP and Mac compatible
- Works with any USB computer
- USB cable and power adapter included

702089

### Aluminum USB 2.0 External 3.5" Drive Enclosure

- Ideal for data storage, backups or transporting data
- USB 2.0 480 Mbps high speed data transfer
- Compatible with any 3.5 IDE hard drive
- Solid aluminum body for protection and excellent heat dissipation
- Shock reduction system
- Stackable design
- Windows 98/2000/Me/XP and Mac compatible
- Works with any USB computer
- USB cable and power adapter included

702072



**USB Floppy Disk Drive**

p. 25



**USB 2.0 PCMCIA Card**

p. 40

RELATED PRODUCTS



### SATA 150 External 2.5" Drive Enclosure

- Use any 2.5" hard drive and get the benefit of SATA 150 speed!
- 1.5 Gbps SATA 150 transfer rate
- Portable pocket size enclosure with carrying pouch
- Shielded SATA 150 connector
- Powered by AC adapter or USB / PS/2 cable (included)

171823



### USB 2.0 External 3.5" Drive Enclosure

- Ideal for data storage, backups or transporting data
- USB 2.0 480 Mbps high speed data transfer
- Compatible with any 3.5 IDE hard drive
- Convenient On/Off Switch
- Cooling Fan for extended drive life
- Windows 98/2000/Me/XP and Mac compatible
- Works with any USB computer
- USB cable and power adapter included

702225



### IEEE 1394 Firewire External 3.5" Drive Enclosure

- Ideal for data storage, backups or transporting data
- IEEE1394 Firewire 400 Mbps High Speed Data Transfer
- Compatible with any 3.5 in. IDE hard drive
- Windows 98/2000/Me/XP and Mac compatible
- Works with any IEEE-1394 enabled computer
- Firewire data cable and power adapter included

701624



### USB 2.0 External 5.25" Drive Enclosure

- Ideal for data storage, backups or transporting data
- <sup>a</sup> USB 2.0 480 Mbps High Speed Data Transfer
- Compatible with any 5.25 in. IDE CD/CDRW/DVD drive or 3.5 in. IDE Hard Drive
- Windows 98/2000/Me/XP and Mac compatible
- Works with any USB computer
- USB cable and power adapter included

701587



### IEEE 1394 Firewire External 2.5" Drive Enclosure

- Ideal for data storage, backups or transporting data
- IEEE1394 Firewire 400 Mbps High Speed Data Transfer
- Compatible with any 2.5 in. IDE hard drive
- Windows 98/2000/Me/XP and Mac compatible
- Works with any IEEE-1394 enabled computer
- No external power required
- Firewire data cable and power adapter included

701600



### USB 2.0 2.5 " External Drive Enclosure

- Ideal for data storage, backups or transporting data
- USB 2.0 480 Mbps High Speed Data Transfer
- Compatible with any 2.5 in. IDE hard drive
- Windows 98/2000/Me/XP and Mac compatible
- Works with any USB computer
- No external power required
- USB cable and power adapter included

701617



### IEEE 1394 Firewire External 5.25" Drive Enclosure

- Ideal for data storage, backups or transporting data
- IEEE1394 Firewire 400 Mbps High Speed Data Transfer
- Compatible with any 5.25 in. IDE CD/CDRW/DVD drive or 3.5 in. IDE Hard Drive
- Convenient On/Off Switch
- Stereo Audio Jacks
- Windows 98/2000/Me/XP and Mac compatible
- Works with any IEEE-1394 enabled computer
- Firewire data cable and power adapter included

701631



3 Port FireWire Hub/Repeater

p. 46



FireWire PCMCIA Card

p. 46

## USB Peripherals



### 4 Port USB 2.0 Sharing Hub

- Ideal for connecting a notebook and a home PC to your USB devices
- Selection button and indicator LED
- 2 ports for connecting to two different PCs
- Includes USB A to B cables

522069



### 7 Port USB 2.0 Hub

- Supports transfer rates up to 480 Mbps
- Backward compatible with any USB device
- All 7 ports have automatic speed detection and over current protection
- Supports self powered mode
- Includes AC power adapter and USB cable
- USB cable included
- Windows® 98/2000/Me/XP compatible

519816

### 4 Port USB 2.0 Pocket Hub

- Bus powered - No external power required!
- Supports USB 2.0 speeds of up to 480 Mbps
- LEDs for power and data transmission

522717



### 4 Port USB 2.0 Slim Line Hub

- Power adapter with space saving plug included
- Supports self powered mode
- Windows 98/2000/Me/XP compatible
- USB cable included

169318



### USB 2.0 Mini Hub

- Built in connection cable
- USB 2.0 compliant
- Bus powered
- Windows 98/2000/Me/XP compatible

522694



**FireFly Lighted Keyboard**

p. 27



**Wireless Optical ScrollBall Mouse**

p. 33

### Ultra Slim USB 2.0 Hub

- Slim line design ideal for notebook and PDA users
- Supports any USB 2.0, 1.1, or 1.0 device
- Overcurrent protection
- Power adapter included
- Windows® 98/2000/Me/XP compatible

519731



### 4 Port USB 2.0 Internal Hub

- Supports any USB device (USB 1.1 or USB 2.0)
- Mounts in any 3.5" or 5.25" bay
- Connects to PC power supply
- Overcurrent protection
- Hot Swappable - Add USB hub to PC, daisy-chain more hubs or connect peripherals while the computer is running
- Windows® 98/Me/2000/XP, MAC and Linux compatible

349284



## 4 Port USB Sharing Hub

- Ideal for connecting a notebook and a home PC to your USB devices
- Individual buttons to select USB devices for each computer
- 2 ports for connecting to two different PCs
- Includes USB A to B cables

519694



**RETAIL  
ADVANTAGE**

see pages 12-15



## 4 Port USB Pocket Hub

- Bus powered
- USB 1.1 compatible
- LEDs for power and data transmission

516419



## 4 Port USB Mini Hub

- Instantly adds four USB ports to your notebook
- Built in connection cable
- Bus powered
- Windows® 98/2000/Me/XP compatible

519700



## 4 Port USB Internal Hub

- 4 port, 3.5" bay mount
- USB 1.1 compliant

323864



## 4 Port USB Hub

- Automatically selects self or bus-powered mode
- Four ports that have automatic packet connectivity and speed detection functions
- USB 1.1 compatible
- LEDs for power and data transmission
- Power adapter included

510431



**USB Audio & Video  
Grabber**

p. 31



**Fun!Cam**

p. 26



## USB Peripherals

### USB Data Bridge

- Transfer files between PCs
- Software included

363792



### USB 2.0 Data Bridge

- Transfer data between PCs
- Software included

365437



### USB Active Extension Cables

- Assures signal quality and USB's electrical and timing specifications
- Connect up to 5 cables in series for a total of 80 ft

510042 5 m



**USB 2.0 PCI Card**  
p. 40



**4 Port USB 2.0 Pocket Hub**  
p. 20



### Long Distance USB 2.0 Extension

- Overcome the 16 ft. (5 m) USB distance limit
- Cascade up to 2 Extenders
- Bus powered - no external power needed
- USB 2.0 compliant

519779 16 ft.



### USB Line Extender

- Extends the distance to any USB device by up to 150 ft. (45 m)
- Requires one standard RJ45 patch cable
- Embedded transceivers enhance signal and prevent signal loss

171632





## USB Printer Cable

- Connects Parallel Printer to USB Port
- Fully Plug and Play compatible
- USB A connector to Centronics 36
- Low power consumption

317474



## RETAIL ADVANTAGE

see pages 12-15

## USB to Serial Converter

- USB to Serial (DB9 male) converter
- Ideal for cellular phones, PDAs or any serial device
- Windows 98/2000/Me/XP, MacOS & Linux compatible
- Cable version

205146



## USB to Parallel Converter

- Creates a printer-compatible DB25 port
- Supports all common printers
- USB 1.1 compliant
- Windows 98/Me/2000/XP

336581



## USB to PS/2 Converter

- Two PS/2 Ports
- Connect a PS/2 keyboard and mouse via USB port

364966



## USB to SCSI Converter

- USB A to MiniDB50 male (SCSI II)
- Windows® 98/2000/Me compatible

326605



**Scroll Mouse**  
p. 32



**Office Keyboard**  
p. 28

## USB Peripherals

### USB 2.0 Infrared Adapter

- Plugs directly into any USB port
- Instantly creates a 4 Mbps Fast Infrared (FIR) port
- Provides convenient data transfer for PDAs, notebooks, printers, mobile phones, or any infrared device
- Up to one meter operating range
- USB 1.1 and 2.0 compliant
- IrDA 1.0 and 1.1 compliant
- 2400 bps to 4 Mbps transfer rates

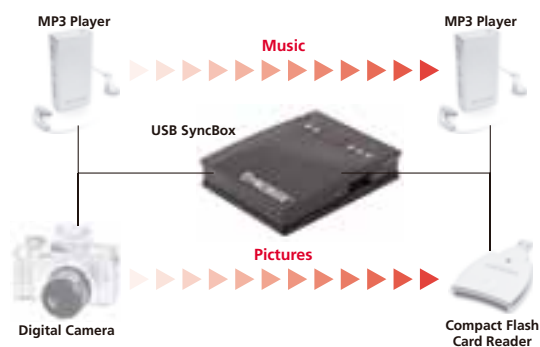
171656



### USB SYNCBOX

- Allows transfer of all files from one USB device to another without the aid of an Operating System
- USB On-The-Go
- Supports PTP
- USB source and USB target female ports
- LED data indicators
- Extremely easy to use
- Requires (3) AAA batteries

172981

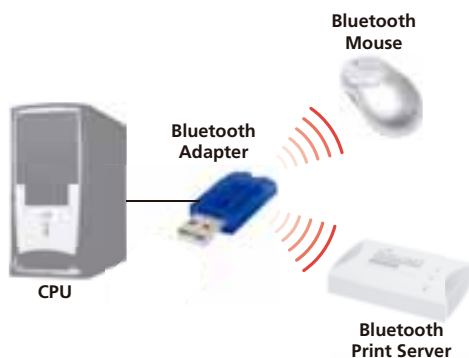


**Bluetooth Mini Optical Mouse**  
p. 33



**USB 2.0 4 Port Sharing Hub**  
p. 20

RELATED PRODUCTS



### USB Bluetooth Adapter

- Adds Bluetooth wireless connectivity to a notebook or PC
- Compatible with all Bluetooth hardware peripherals
- USB 1.1 compliant
- Windows® 98/2000/Me/XP compatible

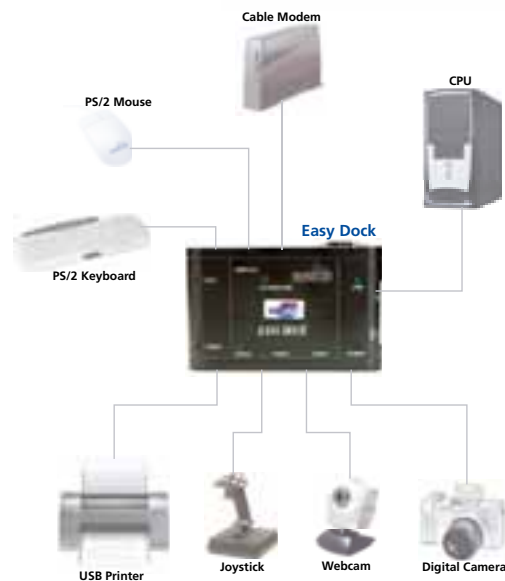
169745



## Easy Dock Multi-Port Docking Station

- Connect/disconnect peripherals in a single step
- Four USB 2.0 ports
- 10/100 Ethernet port
- Serial port
- Two PS/2 ports (keyboard & mouse)
- LED status indicator on all ports
- Includes 4' USB 2.0 cable and AC adapter

172905



## USB Floppy Disk Drive

- Slim design - Ideal for desktop and notebook computers
- Plug and Play - automatic detection and installation
- No external power required
- Windows® 98/2000/Me/XP compatible

700856



## USB 2.0 Mini Docking Station

- 3 USB 2.0 ports
- PS/2 ports for keyboard and mouse

522700



"Your 'Easy Dock' Docking Station and SYNCBOX are two of the most innovative products I've seen in years. They give me two really cool items that simplify life for my customers."

— Charleston,  
West Virginia



# Webcams

## USB Mini Webcam with Audio

- Flexible USB cable
- Built-in microphone
- On/Off switch for 3 bright, white LEDs
- Meet face-to-face online
- Capture and email stills and videos
- Includes user friendly photo-editing software
- Up to 35 frames per second
- Resolutions up to 640 x 480
- Windows 98 / 2000 / Me / XP

173254



## USB Travel Cam

- Meet face-to-face online
- Capture and email stills and videos
- Add live images to your instant messages
- Play cool camera games
- USB for true plug and play setup
- Includes user friendly photo editing/greeting card software
- Windows® 98/2000/Me/XP compatible

170543



## Fun!Cam with Audio

- USB webcam with built-in microphone
- Resolutions up to 640 x 480
- Capable of up to 30 frames per second
- 2 bases included - standard base and a clip-on base
- Capture and e-mail images and videos
- Includes software for photo editing, monitoring, video e-mail, and greeting cards
- Windows 98/2000/Me/XP and Mac OS X compatible

460101



**4 Port USB Sharing Hub**  
p. 21



**USB Active Extension Cables**  
p. 22

RELATED PRODUCTS

## Fun!Cam

- Resolutions up to 640 x 480
- Capable of up to 30 frames per second
- Capture and E-mail images and videos
- Includes software for photo editing, monitoring, video E-Mail, and greeting cards
- Clip for mounting
- Windows® 98/2000/Me/XP and Mac® OS X compatible

460095



## Keyboards



### FireFly Moisture Proof Lighted Keyboard

- Electro-luminescent technology plus hermetically-sealed silicon casing
- Impervious to spills, grease and dirt simply wipes clean
- Ideal for low-light and night environments
- The perfect combination for bars, restaurants, health facilities, gaming, travel and more
- Rugged construction to withstand harsh conditions
- Flexible material rolls up for space-saving storage
- Precise and silent key action
- Flat design eliminates wrist fatigue
- Easily attaches to desktop, counter or walls

I72868

### FireFly Lighted Keyboard

- USB slim keyboard with EL back light and full size keys
- Ideal for low-light and night environments
- Sapphire Blue Electro Luminescent (EL) technology
- Precise and quiet key action
- Multimedia Hot Keys
- 104 key layout with translucent key caps, 17 media keys
- Convenient EL On/Off switch
- EL lifetime: Up to 5,000 hours for half brightness
- Fully compatible with Windows Me/2000/XP

I71939



**Easy Dock Multi-Port Docking Station**  
p. 25



**2 Port USB KVM Switch**  
25.50  
p. 125

RELATED PRODUCTS



## Keyboards



### Deluxe Multimedia Keyboard

- Sleek, Modern Design
- Hot Keys for Multimedia, Internet, Microsoft Office, and Other Applications
- Built-in Ergonomic Wrist Rest
- Windows® 98/2000/Me/XP Compatible

171588 USB & PS/2 Combo

171595 USB & PS/2 Combo, Midnight Black

### Multimedia Keyboard with USB Hub

- Built-in 2 port USB hub for easy access
- Multimedia hot keys include Mute, Volume, Previous, Stop, Play and Next
- Internet hot keys include Back, Forward, Stop, Refresh, Search, Favorites, Home and E-Mail
- Power management hot keys include Power, Sleep and Wake-Up
- Long 10,000,000 key stroke life cycle
- Compact space saving design (430 x 193 x 31 mm) (17" x 7.625" x 1.25")
- Windows compatible

337922



### Economy Keyboard

168632 PS/2 Beige

169974 PS/2, Black

**RETAIL  
ADVANTAGE**

see pages 12-15



**USB to PS/2  
Converter**  
p. 23



**2 Port Compact  
KVM Switch**  
p. 125

RELATED PRODUCTS

### Keypads

- 27 keys
- Numeric keypad with additional keys for scrolling, page up, page down & end

167376 USB



### Wireless Mouse/Keyboard Combo

- Radio Frequency Technology - Line of sight with receiver not required
- Wireless Multimedia Keyboard with 18 internet and multimedia hot keys
- Hot keys for Microsoft® Word, Excel and PowerPoint
- Undo and Redo keys

157728





## Roll-up Keyboard

- Great for traveling!
- Roll-up for easy storage
- Dust and moisture proof
- CE and FCC tested and approved
- Standard PS/2 104 keyboard
- Lifetime: 15,000,000 keystrokes
- Windows 98/2000/Me/XP compatible

I56530

I71625 PS/2, White

I71618 UBS-PS/2 Combo, White

431637 Multimedia PS/2, Blue

I71571 Multimedia PS/2, White

I72059 UBS-PS/2 Combo, Blue

## Graphics Tablet

- Easily paint, draw, sketch, sign, markup documents
- Send Handwritten E-mail
- Graphics Tablet combines all keyboard, mouse and pen functions into one integrated device

I69035 USB, 5.5" x 4"

I71878 USB, 8" x 6"



## Presentation Mouse

- Perfect for use with projectors
- Radio frequency signal line of sight not required
- Control PC from up to 30 feet away
- Built-in laser pointer
- Convenient thumb-controlled scroll ball

- No software required
- Windows® 98/2000/Me/XP compatible

I71069



**USB 2 Port PCI Card**  
p. 40



**University Notebook Backpack**  
p. 95

RELATED PRODUCTS

## Barcode Scanners

**Manhattan Barcode Scanners read the following codes:**

- ALL UPC/EA/JAN
- Code 39
- Code 39 FULL ASCII
- Code 128
- Interleave 25
- Matrix 25
- CODABAR/NW7
- BC 412
- Code 11
- MSI/PLESSEY
- Code 93
- China Postage
- Code32/Italian Pharmacy



### Contact CCD Barcode Scanner

- Keyboard Wedge Decoder  
(data appears as if typed from the keyboard)

400374 6 cm, USB

400343 6 cm, PS2

400367 8 cm, USB

460002 8 cm, PS2



### Long Range CCD Barcode Scanner

- Reads barcodes up to 12 away
- Keyboard Wedge Decoder  
(data appears as if typed from the keyboard)
- Easy to use, no software required

400954 PS2

400961 USB



SUCCESS STORIES

"MANHATTAN's growing line of barcode scanners has gotten me into several new retail markets. I even use the new long-range CCD model in several of own stores."

— Athens,  
Georgia



## USB Peripherals



### USB 2.0 Video Grabber

- Encoding in MPEG I / II format directly with InstantMPEG Technology
- Up to 30 frames per second
- Snapshot function support
- Support Brightness, Hue, Contrast, Saturation, and Sharpness Control
- Powerful Video Editing Software with special effects
- Plug and Play
- Low Power Consumption Ideal for notebook / portable computers
- No batteries required

I71472

### USB Video Grabber

- Encoding in MPEG I / II format directly with InstantMPEG Technology
- Up to 30 frames per second
- Snapshot function support
- Support Brightness, Hue, Contrast, Saturation, and Sharpness Control
- Powerful Video Editing Software with special effects
- Plug and Play
- Low Power Consumption Ideal for notebook / portable computers
- No batteries required

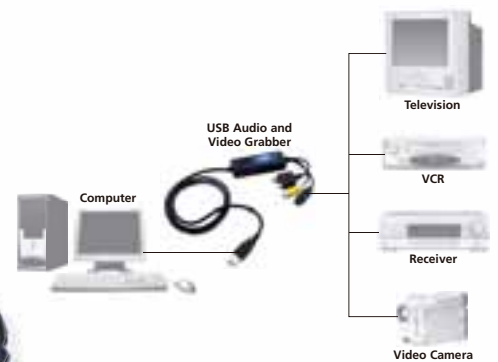
I64184



### USB 2.0 Audio & Video Grabber

- High Speed USB 2.0 transfer rate for best audio and video recording and editing
- Capture audio and video from any S-video, RCA, or analog video source
- Record and edit full motion video or take snapshots
- Recording/editing software included
- RCA and S-video inputs, 3.5 mm audio jack
- Windows 98/2000/Me/XP compatible

I72431



### USB Audio & Video Grabber

- Encoding in MPEG I / II format directly with InstantMPEG Technology
- Up to 30 frames per second
- Snapshot function support
- Support Brightness, Hue, Contrast, Saturation, and Sharpness Control
- Powerful Video Editing Software with special effects
- Plug and Play
- Low Power Consumption Ideal for notebook / portable computers
- No batteries required

I57650



**USB 2.0 PCI Card**  
p. 40



**7 Port USB 2.0 Hub**  
p. 20



## Mice

### Optical Scroll Mouse

- Precision Laser Optical design - no mouse ball
- Optical scrolling wheel for browsing and zooming
- Windows compatible

I67833 PS/2

I67697 PS/2, Black

I67840 USB,

I71496 USB, Black



### Optical Scroll Mouse

- Scrolling wheel for browsing
- Scrolling and zooming function
- Programmable 3rd button
- Opti-mechanical technology
- 400 dpi resolution
- Windows® compatible

I65266 PS/2

I69844 PS/2, Black

I65013 USB,

I69851 USB, Black



### PS/2 Value Mouse

- 2-button PS/2
- 250-2500 dpi dynamic resolution
- Mini DIN6 female connection
- Windows compatible
- Retail Packed

I59227



### Mini Optical Scroll Mouse

- Ideal for traveling and mobile professionals
- Precision optical design
- Single scroll wheel for both vertical and horizontal scrolling
- Windows® compatible

I69899 Black



### USB Value Mouse

- 3-button USB
- 250-2500 dpi dynamic resolution
- Windows compatible

I67796



**USB to PS/2 Converter**  
p. 23



**Monitor, Keyboard, and Mouse Data Switch 2 Port**  
p. 87



### Bluetooth Mini Optical Mouse

- 2.4 Ghz RF band operation
- Ideal size for notebook computers
- Precision optical sensor
- Programmable scrolling wheel
- 10 Meter (32+ ft.) operational range
- Compatible with all Bluetooth adapters
- Requires additional Bluetooth hardware on user PC

I71687

### Wireless Optical ScrollBall Mouse

- Wireless Freedom - Digital Radio Frequency Technology - Line Of Sight with Receiver Not Required
- Optical Precision Movement - 800 DPI High Resolution Sensor - No Moving Parts to Clean
- 360 degree ScrollBall for navigating windows with scrollbars. Includes zoom function.
- Adjustable transmit frequency and security codes
- Optical technology works on almost any surface
- Power saving sleep/one touch wake up
- Windows® 98/2000/Me/XP compatible

I71267



Scroll ball for X & Y axis, 8-way scrolling

### Wireless Optical Mouse with Mini Receiver

- Mini cordless optical mouse
- Ideal for notebook computers
- Compact USB receiver
- Line of sight with receiver not required
- Optical sensor system stays precise, no moving parts to clean
- Programmable scroll wheel with more than 30 different functions including zoom and horizontal or vertical scroll
- Windows® 98/2000/Me/XP compatible

I73148



### Wireless Scroll Mouse

- RF Technology, line of sight with receiver not required
- Scrolling wheel for browsing
- Windows compatible

I67413 RF, PS2

I67871 RF, USB



Ultra-Thin Mouse Pad

p. 104



Park Avenue Notebook Case

p. 93

## Multimedia Speakers Systems



### 4000 Series 6-Piece Home Theater Speaker System

- High-end home theater audio system with built-in amplifier
- 1 large subwoofer; 4 full-range satellite speakers, 1 center speaker
- Magnetically shielded to prevent monitor distortion
- Convenient control box for adjusting power, volume and bass
- Stylish silver and black casing
- Cables and speaker stands included
- 20 Hz - 50 kHz frequency range
- 1500 Watts PMPO
- AC adapter
- Power LED and On/Off control.

171908

### 3200 Series 3-Piece Subwoofer Speaker System

- High-end powered satellite and floor subwoofer speaker system
- Modern slim-line desktop speakers
- Powerful, reflex tuned wood-case subwoofer with 4" driver for deep, rich bass
- Remote volume and tone control
- Magnetically shielded to prevent monitor distortion
- 30 Hz - 20 kHz frequency range
- Wooden subwoofer housing.

168809



**680**  
WATTS  
PMPO

### 3100 Series 3-Piece Multimedia Speaker System

- High-end powered satellite and subwoofer speaker system
- Powerful 4 inch subwoofer driver
- Separate, front-mounted bass and treble controls
- Magnetically shielded to prevent monitor distortion
- Cloth grill
- 20 Hz - 20 kHz frequency range.

168731



**580**  
WATTS  
PMPO

Speaker/Headset  
Switching Hub  
p. 36



Extreme Gaming  
Stereo Headset  
p. 39

RELATED PRODUCTS



### 3000 Series Speaker System

- Powered high-end multimedia speaker system
- Separate, front-mounted bass and treble controls
- Magnetically shielded to prevent monitor distortion
- 30 Hz - 19 kHz frequency range.

168816



### Crystal Series Multimedia Speaker System

- High-quality sound in a compact, modern design
- Magnetically shielded to prevent monitor distortion
- 120 Hz - 16 kHz frequency range

168823



### 1100 Series Speaker System

- Compact powered multimedia speaker system
- Magnetically shielded to prevent monitor distortion
- Cloth grill
- 80 Hz - 16 kHz frequency range

168779

168779 Black



**RETAIL  
ADVANTAGE**

see pages 12-15

### 1000 Series Speaker System

- Compact powered multimedia speaker system
- Magnetically shielded to prevent monitor distortion
- Convenient headphone jack
- 100 Hz - 16 kHz frequency range.

168762



"The MANHATTAN FireFly Lighted Keyboard and 4000 Series 6-Piece Home Theater Speaker System have been big hits in my store."

— Orlando,  
Florida

## Multimedia Speakers Systems

### Baymount Speaker System with 2 USB Ports

- Transfers main board USB ports to the front for easy access
- Built in amplifier
- Dual anti magnetic stereo speakers
- 245 Hz - 16 kHz frequency range

I68670



### 1000 Series USB Powered Speaker System

- Powered via USB port
- Magnetically shielded to prevent monitor distortion
- Convenient headphone jack
- 100 Hz - 16 kHz frequency range

I69004

### Speaker/Headset Switching Hub

- Easily switch between speakers and headset
- Volume control
- 3.5 mm plug for speakers and headset
- 2.5 mm plug for hands-free earphones
- On/Off switch for microphone
- 6 ft. cord

I72851



### Flexible Gooseneck Microphone

I65242



**ATX Mid Tower**  
p. 49



**4 Port USB Pocket Hub**  
p. 21

### Clip-on Microphone

I66188



### Desktop Boom Microphone Metal Base

- Adjustable microphone can be set to many different positions
- Swivel base Suitable for multimedia, voice recognition and internet applications
- Amplifies up to 15 times
- 3 position gain control
- Condenser microphone
- Frequency response: 20 Hz-16 kHz

A. I58954 Metal Base

B. I64306 Plastic Base

I.65 / 2+

I.40 / 10+

## Multimedia

### Wireless Stereo Headphone

- Radio frequency technology Line of sight with receiver not required
- Effective Range up to 100 Meters/ 360 degrees
- 20-20,000 Hz frequency response
- Self-adjusting inner headband for perfect fit
- Quickly connects to audio output of PCs, TVs, VCRs, etc.
- Adjustable frequency tuning for optimum performance
- Battery Charger in Transmitter
- Headset requires two (2) AA rechargeable batteries
- Includes RCA cable, 3.5 mm plug cable, AC power adapter

171199



### Economy Headset

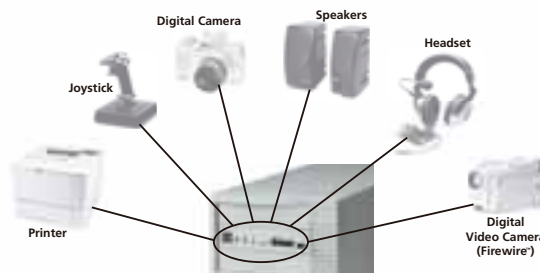
- 6 ft. cord
- 3.5 mm plug

172479

### Multimedia Access Panel

- Moves USB, FireWire®, microphone, headphone and game ports to the front of the PC for easy access
- Mounts in any 5.25" bay

168595



### Multimedia Access Panel

- Transfers any or all of the following to front of PC for easy access: USB Ports (2) / FireWire® / Headphone Jack / Microphone Jack / Line-In Jack
- Mounts in any 3.5" bay

169752 Beige

170673 Black



**Slimline Stereo Headset**  
p. 39



**External Drive Enclosure**  
p. 19



## Multimedia

### Stereo Headset

- Stereo Headphone with Foam Earpads
- Microphone for hands free communication
- Adjustable volume control

164429



### Single Ear Headset

- 6ft. cord
- 3.5 mm plug
- Flexible microphone

173070



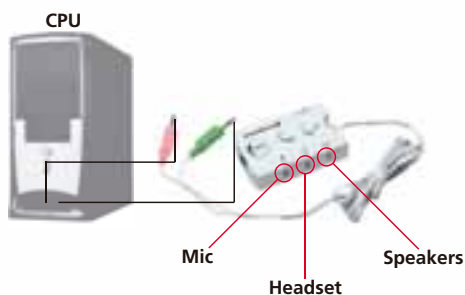
### Professional Single Ear Headset

- 6 ft. cord
- 3.5 mm plug
- Slim microphone
- Volume control

173063



**1000 Series  
Speaker System**  
p. 35



**Stereo Y-Cable**  
p. 75

RELATED PRODUCTS

### Speaker/Headset Switching Hub

- Easily switch between speakers and headset
- Volume control
  - 3.5 mm plug for speakers and headset
  - 2.5 mm plug for hands-free earphones
  - On/Off switch for microphone
- 5 ft. cord

172851



## Stereo Swivel Headset

- Earphones rotate 90 degrees for many uses
- Microphone is embedded in the volume control
- Extremely durable braided connecting cable
- Adjustable volume control
- Super Bass system
- Distortion free even at maximum volumes

I75012



## Slimline Stereo Headset

- Futuristic sleek look
- Flexible microphone for hands free communication
- Adjustable volume control
- Distortion free even at maximum volumes

I73049



## Stereo Headset

- Sleek look with padded earphones
- Flexible padded microphone for hands free communication
- Adjustable volume control
- Super Bass system
- Distortion free even at maximum volumes

I75050



## Deluxe Stereo Headset

- Full ear style earphones for extreme comfort
- Very good noise dampening Wont disturb the people around you!
- Flexible padded microphone for hands free communication
- Adjustable volume control
- Extreme Bass system
- Exceptionally loud volume
- Distortion free even at maximum volumes

I75005



## Extreme Gaming Stereo Headset

- Sleek futuristic look
- Full ear style earphones for extreme comfort
- Very good noise dampening Wont disturb the people around you!
- Flexible padded microphone for hands free communication
- Adjustable volume control
- Extreme Bass system
- Exceptionally loud volume
- Distortion free even at maximum volumes

I75029



**Multimedia Access Panel**

p. 37



**4000 Series 6-Piece Home Theater Speaker System**

p. 34

## USB 2.0 Cards

**RETAIL  
ADVANTAGE**

see pages 12-15



### USB 2.0 PCI Card

- Adds 3 external & 1 internal USB 2.0 ports
- Generates USB 2.0 speeds up to 480 Mbps
- Allows upgrade from USB 1.1 (12 Mbps)
- Supports any USB device (USB 1.1 or USB 2.0)
- Plug and Play for Windows 98/2000/ME/XP

169011 3 external & 1 internal USB 2.0 Ports

167741 2 external USB 2.0 Ports

171557 4 external USB 2.0 Ports

### USB 2 Port PCI Card

- Adds two USB ports
- USB 1.1 compliant
- Fully compliant with PCI specification 2.1
- Windows 98/2000/Me/XP, MAC OS compatible

317993



### USB 2.0 5 Port Kit

- 3 front bay mount ports for easy access
- 2 rear ports (PCI card)
- Upgrades USB 1.1 to 2.0 (480 Mbps)
- Requires 1 open PCI slot
- Windows 98/2000/ME/XP compatible

339018

### USB 2.0 PCMCIA Card

- Add 2 USB 2.0 ports to any laptop or notebook computer
- Compatible with any USB device
- 32 bit card bus fits type II or type III PCMCIA slots
- USB 1.0/1.1/2.0 compliant
- Windows 98/2000/ME/XP compatible

516167



**FireFly Lighted  
Keyboard**  
p. 27



**ATX Baby Tower**  
p. 48

RELATED PRODUCTS



## Controller Cards



### PCI Ultra 133 Raid Controller Card

- Two Ultra 133 IDE channels with 40 pin/80 wire connectors
- Supports up to 4 IDE/ATA devices
- RAID Level 1 (Mirroring) - an identical copy of your data is placed on another drive
- RAID Level 0 (Striping) - increases sustained data transfer rates
- RAID Level 0 + 1
- Supports any IDE hard drive, DVD, CD-ROM or ZIP drive
- Windows® 98/2000/Me/XP/NT 4.0 compatible

I68700

### Ultra SCSI Controller Card

- For Ultra SCSI devices
- 20 Mbps transfer rate
- 7 devices maximum
- 50 pin internal connector
- DB50/HP external connector
- Driver support: Windows 98/2000, NT, DOS, SCO UNIX, Netware, OS2 and Solaris

I55151



### Ultra-Wide SCSI Controller Card

- For Ultra-wide SCSI devices
- 40 Mbps transfer rate
- 15 devices maximum
- 50 pin and 68 pin internal connectors
- DB68/HP external connector
- Driver support: Windows 98/2000, NT, DOS, SCO UNIX, Netware, OS2 and Solaris

I55410



### PCI Ultra 133 Controller Card

- Two Ultra 133 IDE channels with 40 pin/80 wire connectors
- Supports up to 4 IDE/ATA devices
- Supports any IDE hard drive, DVD, CD-ROM or ZIP drive
- Windows 98/2000/Me/XP/NT 4.0 compatible
- Bootable

I68694



### Ultra 2 LVD SCSI Controller Card

- For Ultra 2 LVD devices
- 80 Mbps transfer rate
- 15 devices maximum
- 68 pin LVD internal connector
- DB68/HP external connector
- Driver support: Windows 98/2000, NT, DOS, SCO UNIX, Netware, OS2 and Solaris

I55489



### Ultra 160 SCSI Controller Card

- For Ultra 160 devices
- 160 Mbps transfer rate
- 15 devices maximum
- 68 pin Ultra 160 internal connector
- DB68/HP external connector
- Driver support: Windows 98/2000, NT, DOS, SCO UNIX, Netware, OS2 and Solaris

I55984



SCSI Cable  
p. 73



SCSI Cable  
p. 73

## Controller Cards

### PCI SATA 150 RAID Controller Card

- Provides two SATA 150 channels
- Supports RAID level 0,1
- Supports ATA150 rates of up to 1.5 Gbps
- Silicon Image® chipset
- Bootable with ROM BIOS support
- Supports hard drives over 137 GB
- Windows® 98/Me/NT/2000/XP compatible

170376

**RETAIL  
ADVANTAGE**

see pages 12-15



### PCI SATA 150 2 Port Adapter

- Adds one internal and one external SATA 150 port
- Use with any SATA 150 drive
- 1.5 Gbps transfer rate
- SATA 1.0 compliant
- Sil 3112 Chipset
- Supports PIO and DMA Modes
- PCI 2.2 compliant, 3.3V operating voltage with 5V tolerance
- Includes drivers for Windows 98/2000/Me/XP
- Linux compatible

171816



### SATA 150 / USB 2.0 Combo Controller Card

- Adds USB 2.0 and SATA 150 ports
- 3 External USB 2.0 ports
- 2 Internal USB 2.0 ports
- Fully USB 2.0 and SATA 150 compliant
- Windows 98/2000/Me/XP compatible

171809



**SATA 150 2.5 in  
HDD Enclosure**  
p. 18



**ATX Mid Tower**  
p. 49

### SATA 150 Controller PCMCIA Adapter, 2 Port

- Adds two fully compliant SATA 150 ports to any notebook
- 32 bit cardbus PC card
- Supports data rates of 1.5 Gbps
- Ideal for any SATA drive or storage device
- Windows 98/2000/Me/XP compliant

171786





### SATA 150 to IDE Converter

- Use with any IDE hard drive, DVD, CD or CD-RW drive
- Allows IDE drives to operate with SATA 150 controllers
- 1.5 Gb/s transfer rate
- SATA 1.0 compliant
- Requires one SATA 150 cable
- Vertical Connection

170598 Vertical Connection

### SATA 150 to IDE Converter

- Use with any IDE hard drive, DVD, CD or CD-RW drive
- Allows IDE drives to operate with SATA 150 controllers
- 1.5 Gb/s transfer rate
- SATA 1.0 compliant
- Requires one SATA 150 cable

172202 Horizontal Connection

### IDE to SATA 150 Converter

- Use with any SATA 150 hard drive
- Allows SATA 150 drives to operate with IDE controllers
- 66/100/133/150 MB/s transfer rate
- SATA 1.0 compliant

170567 Horizontal Connection



### EL SATA 150 Cable

- Electro luminescent cable for custom cases
- Cable for new SATA 150 hard drives

365550

### SATA 150 Cable

- Cable for new SATA 150 hard drives

340700 50 cm (20 in)

340717 50 cm (20 in)



ATX Baby Tower  
p. 48

### Serial ATA Power Cable

- 4 Pin to 15 Pin

342766 16 cm (6.5 in.)



Hard Drive Cooler  
and Mounting Kit  
p. 53



## Parallel Cards

### PCI Low Profile Enhanced Parallel Card

- Half-height low profile card with 8 cm low profile bracket
- PCI bus enhanced parallel port (EPP) - adds one additional LPT port to any PCI-equipped PC
- Easy Plug and Play installation - automatically configures I/O addresses and IRQ
- Configurable for standard ISA parallel port addresses (0278 and 0378) for compatibility with legacy peripherals (e.g. Zip Drives)
- Up to 3 times faster than standard ISA and motherboard EPP parallel ports
- Windows 98/2000/Me/XP compatible

166744

**RETAIL  
ADVANTAGE**

see pages 12-15

### PCI Enhanced Parallel Card

- PCI bus enhanced parallel port (EPP) - adds one additional LPT port to any PCI-equipped PC
- Easy Plug and Play installation - automatically configures I/O addresses and IRQ
- Up to 3 times faster than standard ISA and motherboard EPP parallel ports
- Windows 98/2000/Me/XP compatible
- Mercury Technology

324007



### PCI Dual Serial / Single Parallel Combo Card

- Two High Speed 16550 UART serial ports (one 9 pin & one 25 pin) - maximum data rate for each port: 115.2 kbps
- One Enhanced (EPP) parallel port up to 3 times faster than any other PC parallel port
- Fully supports IRQ sharing - saves valuable resources for other expansion cards
- Easy Plug and Play installation - automatically selects next available IRQ and I/O addresses
- Fully compliant with PCI specification 2.1
- Windows® 98/2000/Me and Linux compatible

165495

### PCI Enhanced Dual Port Parallel Card

- Dual PCI bus enhanced parallel port (EPP): adds 2 additional LPT ports to PCI-equipped PC
- Up to 3 times faster than standard ISA and motherboard EPP parallel ports
- Easy Plug and Play installation - automatically configures I/O addresses and IRQ
- Both ports share 1 IRQ - even when accessed simultaneously. Saves resources for other expansion cards
- Configurable for standard ISA parallel port addresses (0278 and 0378) for compatibility with legacy peripherals (e.g. Zip Drives)
- Windows 98/2000/Me/XP compatible
- Mercury Technology

165297



**IEEE 1284  
Printer Cable**  
p. 70



**Flex ATX Case**  
p. 48

RELATED PRODUCTS

## Serial Cards • Modems

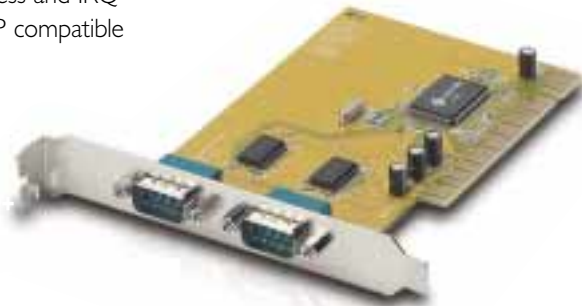
### PCI Low Profile Enhanced Parallel Card

- PCI bus 9 pin High Speed 16550 UART serial ports - adds additional COM ports to any PCI equipped PC. Maximum data throughput rate: 115.2 kbps
- Fully supports PCI IRQ sharing - saves valuable resources for other expansion cards
- Easy Plug and Play Installation - automatically configures next available COM address and IRQ
- Windows 98/2000/Me/XP compatible
- Mercury Technology

I65976 1 Port

I65273 2 Port

I65501 4 Port



### PCI 56K Modem

- Phone / Fax / Voice
- 32 Bit Bus interface
- Windows 98/2000/Me/XP compatible

I53577



### USB 56K External Modem

- Fast 56 kbps download speeds
- Pocket size
- Windows 98/2000/Me/XP compatible

I54383



### PCI Low Profile Enhanced Serial Card

- Half-height low profile PCI card with 8 cm low profile bracket
- PCI bus 9 pin High Speed 16550 UART serial port - adds an additional COM port to any PCI equipped PC. Maximum data throughput rate: 115.2 kbps
- Fully supports PCI IRQ sharing - saves valuable resources for other expansion cards
- Easy Plug and Play Installation - automatically configures next available COM address and IRQ
- Windows 98/2000/Me/XP compatible

I66614



### PCMCIA Serial Card

- Adds a Serial Port (RS232) to Notebook Computers
- Compatible with Most Serial Devices
- Fits any Type II PCMCIA Slot
- Creates a DB9 pin Com port
- Windows® 98/2000/Me/XP compatible
- Fast 16C950 high performance UART chipset
- Automated flow control, X on /X off

I71519 1 Port



### PCMCIA 56K Modem

- Phone / Fax
- Cirrus Logic chipset
- 32 Bit Bus interface
- Windows 98/2000/Me/XP compatible

I55403



**DSL/Cable Modem Router**  
p. 131



**Wireless Super G Access Point**  
p. 121

## FireWire®

### FireWire PCI Card

- 3 external FireWire ports
- 400 Mbps transfer rate
- Fully compliant with PCI specification 2.1
- Run up to 63 devices simultaneously
- Windows 98/2000/Me/XP compatible

167024 FireWire PCI Card

168588 FireWire PCI Card with video editing software

### 6 Port FireWire Hub/Repeater

- Instantly adds 6 FireWire ports
- Automatically detects transfer rate
- LEDs for power and data transmission
- Run up to 63 FireWire devices simultaneously

515405 6 Port

515399 3 Port

### FireWire PCMCIA Card

- Adds FireWire ports to any notebook computer
- Compatible with any FireWire device
- Windows 98/2000/Me/XP compatible

512411

### Illuminated FireWire Cable

- Firewire 1394 connection cable

365642 6 Pin - 4 Pin, 6 ft. White

365635 6 Pin - 6 Pin, 6 ft. White



**ILLUMINATED ENDS**

### IEEE 1394 Firewire Cable

- For IEEE 1394 Fire Wire peripherals with power source

334068 6 pin to 6 pin 6 ft

334259 6 pin to 4 pin 6 ft. White

334020 4 pin to 4 pin 6ft

### IEEE 1394b Cable

- Connects a 1394a device to a 1394 port
- Connects a 1394b device to a 1394a port

347532 6 ft., Black

### IEEE 1394b Cable

- Connects a 1394a device to a 1394b port
- Connects a 1394b device to a 1394a port

347556 6 ft., Black

### IEEE 1394b Cable

- Connects a 1394b device to a 1394b port
- 800 MHz

347563 6 ft., Black



**External Drive Enclosure**  
p. 19



**Network Attached Storage**  
p. 135

RELATED PRODUCTS



## Card Readers



### Card Reader & Multimedia Panel

- Reads/writes CompactFlash/E, Smart Media, Memory Stick, Multimedia, Secure Digital, and IBM® Microdrive cards
- Transfers any or all of the following to front of PC for easy access: USB Ports (2) / FireWire® Port / Headphone Jack / Microphone Jack / Line-In Jack
- Supports hot swapping between cards
- Drag and drop between cards
- Mounts in any 5.25" bay
- Automatic card detection
- Low power consumption
- USB Plug and Play for Windows® 98/2000/Me/XP and Mac®
- Note: ports/jacks must already exist on PC

701921

### 6-in-1 Universal Card Reader

- Reads/writes CompactFlash, Smart Media, Memory Stick, Multimedia card, Secure Digital media, and IBM Microdrive cards
- Supports hot swapping between cards
- Automatic card detection
- Low power consumption
- USB Plug and Play for Windows 98/2000/Me/XP and Mac

701648 USB

701822 USB 2.0



### Bay Mount 6-in-1 Card Reader

- Mounts in any 3.5" bay
- Reads/writes CompactFlash, Smart Media, Memory Stick, Multimedia card, Secure Digital media, and IBM Microdrive cards
- Supports hot swapping between cards
- Automatic card detection
- Low power consumption
- USB Plug and Play for Windows 98/2000/Me/XP and Mac

701525 USB

701907 USB 2.0



**ATX Mid Tower**  
p. 49



**USB 2.0 PCI Card**  
p. 40

## Cases

### ATX Baby Tower

- 3 x 5.25" bays
- 2 x 3.5" bays
- 2 Internal drive bays
- Includes 300 W power supply
- Front USB 2.0 and audio

171489 Black

169929 Beige



### Designer ATX Mini Tower

- 3 x 5.25" and 2 x 3.5" bays
- 2 internal drive bays
- Includes 300 W power supply

166287

### ATX Mini Tower

- 3 x 5.25" and 2 x 3.5" bays
- 2 internal drive bays
- Includes 400 W power supply
- Screwless hard drive bays

169332



**Round IDE  
Ultra 100 Cable**  
p. 66



### Rack Mount ATX Case

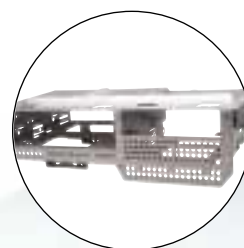
- 300 W UL power supply included
- Fits any standard 19" rack or enclosure

169240 4 U rack mount case

168625 2 U rack mount case

166653 Redundant power supply, 300 W, UL listed

166654 Slide Rails for mounting in cabinets



### Flex ATX Case

- Accepts both Flex ATX and Micro ATX motherboards
- Screwless design with removable drive carriage for ease of assembly
- 1 x 5.25 bay and 2 x 3.5 bays
- 1 x internal bay
- Front USB (2), Firewire, and Audio Ports
- 200 W power supply

171991



**Bay Mount  
System Cooler**  
p. 53



### ATX Mid Tower

- 4 x 5.25" and 2 x 3.5" bays
- 2 internal drive bays
- Includes 400 W power supply
- Front USB 2.0 and audio

I71731 Black

I69264 Clear side panel for I71731



### ATX Mid Tower

- 4 x 5.25" and 2 x 3.5" bays
- 6 internal drive bays
- Includes 400 W power supply
- Front USB 2.0 and audio

I71717 Black

I71748 Clear side panel for I71717

I71724 Beige

I71755 Clear side panel for I71724



### Screwless ATX Mid Tower

- Modular assembly
- Screwless removable drive bay
- Screwless removable side panels
- 4 x 5.25" and 2 x 3.5" bays
- 2 internal drive bays
- Includes 300 W power supply

I68717 Black

I69257 Beige

I70512 Case with Window

I69790 Module adds two USB ports to the front of I69257 and I98717



Office Keyboard  
p. 28



Optical  
Scroll Mouse  
p. 32



## Case Modifications

### Cold Cathode Lamp

- Pass-thru power connector
- On/Off switch

172806	Midnight Blue
172813	Apple Green
172820	Cherry Red
172790	UV Black



### Cold Cathode Lamp

- Adjustable voice activated flash frequency
- Function switch for power on/off, normal, or voice activated
- Pass-thru power connector

169400	Midnight Blue
169417	Apple Green
169424	Cherry Red
169943	UV Black



### Dual Cold Cathode Lamp, Sound Activated

- Two bulbs for twice the light!
- Pass-thru power connector
- On/Off switch

172752	Midnight Blue
172769	Apple Green
172745	Cherry Red
172738	UV Black



### LED "Laser" Lamp

- Illuminates entire case
- Self-adhesive tape for mounting
- Standard 4-pin power connector

172318	Blue
172325	Green
172301	Red
172295	White
172288	UV Light



**Power Supply  
for Cases**  
p. 54

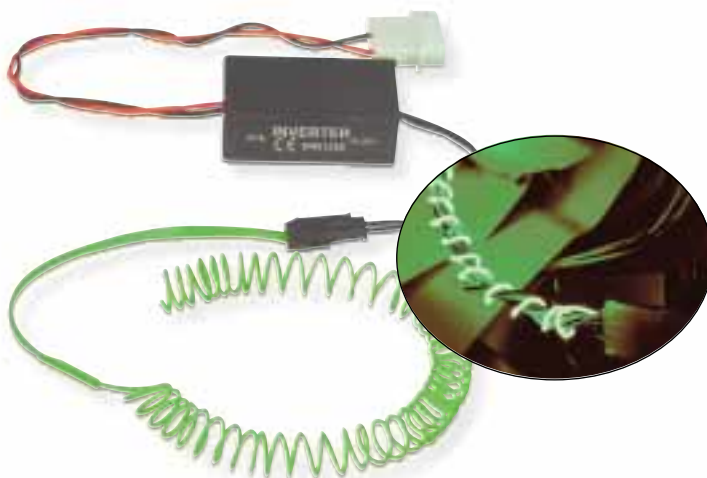


**Mountable  
Slot Cooler**  
p. 53

### EL Cable Kit - Neon Green

- 5 ft. Electro-Luminescent cable
- Designed for use anywhere inside a computer case
- Includes inverter with standard 4 pin power supply connector

170703	Neon Green
170710	Blazing Yellow
170734	Flaming Red
170741	Electric Blue

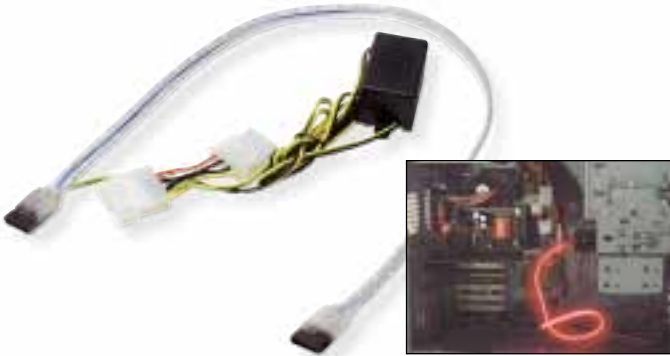


RELATED PRODUCTS

## EL SATA 150 Cable

- Electro luminescent cable for custom cases
- Cable for new SATA 150 hard drives

365550 0,5 m



## UV Sensitive ATA 133 Round Cable

- Glows neon green when exposed to ultraviolet cold cathode lighting
- For Ultra 133/100/66 IDE drives
- 3 connectors, 80 conductors
- Round design for increased air flow

344715 18 in, UV

344722 24 in, UV

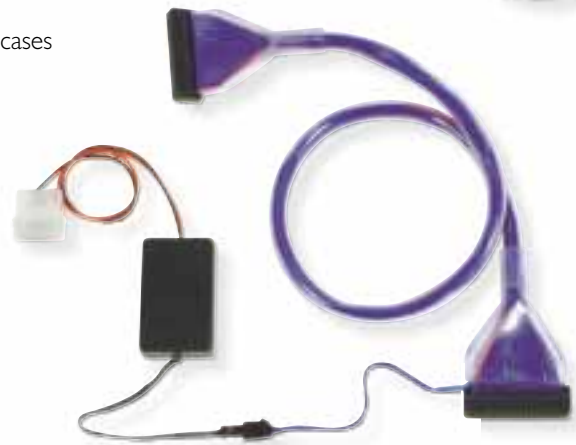
344739 36 in, UV



## UV Sensitive Round Floppy Drive Cable

- 2 connectors, 34 conductors

344708 24 in



## EL ATA 133 Round Cable Electric Blue

- Electro-luminescent cable for custom cases
- For Ultra 133/100/66 IDE drives
- 3 connectors, 80 conductors
- Round design for increased air flow

344746 18 in, EL

344753 24 in, EL;

344760 36 in, EL



## EL Floppy Drive Cable Electric Blue

- 2 connectors, 34 conductors

345262 24 in.



**RETAIL  
ADVANTAGE**  
see pages 12-15

## Lighted Case Fan

- Ball bearing
- 3.1875" x 3.1875" x 1" (80 x 80 x 25 mm)
- 4 pin
- 34 CFM air flow

701686 Midnight Blue

701693 Apple Green

701679 Cherry Red

701709 Rainbow



## 4 Channel Fan Controller

- Fits in any 5.25" bay
- 4 colored control knobs
- Supports fans up to 13 Watts
- Ideal for high CFM fans

172066 Black

172004 Silver



**ATX Mid Tower**  
p. 49



**Clear Side Panel  
for ATX Mid Tower**  
p. 49

## CPU Coolers

### CPU Cooler for AMD

- High End Copper Heatsink
- Specifically designed for ultimate cooling of all socket A CPUs

701792



### Cooler for AMD Duron

- Socket A CPUs up to 2.0 GHz

337946



### Cooler for Pentium® IV

- Specially designed for socket 478 Pentium® IV CPUs up to 2.4 GHz

701785



### Cooler for Socket 7/370

- Large heatsink design for AMD® K6 and Intel Celeron CPUs
- Works with all Socket 370, PPGA, flip chips and Socket 7 CPUs

700580 4 pin connector

700252 3 pin connector

### CPU Cooler for Pentium® IV

- Specially Designed for high speed Socket 478 Pentium® IV CPUs up to 3.0 GHz

- Large Heatsink for Optimum Cooling
- Ball Bearing
- 3-Pin Motherboard Connector

701853



### Cooler for Pentium® III

- S.E.C.C. II or P-III CPU Cooling Fan
- Dual Fan

700627



### Cooler for Pentium® II

- Single fan version

700399



**ATX Baby Tower**  
p. 48



**PowerY Cable**  
p. 67



Office Accessories

Active Networking

Passive Networking

## Video Card Chipset Coolers

- Specially designed to keep video card chipsets cool
- Spring clip attachment
- 7 CFM air flow

701402 Standard version

701334 Orbit version

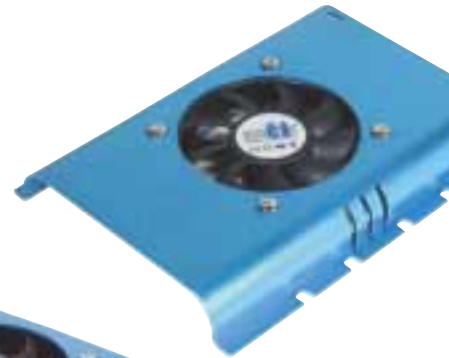


## Hard Disk Cooler

- Eliminates drive overheating
- Fits directly on any 3.5" hard drive
- Extends hard drive life
- Receives power via 4 pin pass-through connector
- 23 CFM air flow

700559 Single Fan Design

210799 Dual Fan Design



## CPU Thermal Grease

- Use to increase thermal conductivity between CPU and heat sink
- Prolongs CPU life

701662 1.5 grams



## Case/Power Supply Fans

- Fan, sleeve

700665 4 pin, 1.58 x 1.58 x 0.79 in (40 x 40 x 10 mm)

- Fan, sleeve

700313 4 pin, 2.375 x 2.375 x 1.1875 in (60 x 60 x 20 mm)

- Fan, sleeve

700320 4 pin, 3.1875 x 3.1875 x 1 in (80 x 80 x 25 mm)

- Fan, Ball-Bearing

700955 3 pin, 3.1875 x 3.1875 x 1 in (80 x 80 x 25 mm)

- Fan, Ball-Bearing

700894 4 pin, 3.1875 x 3.1875 x 1 in (80 x 80 x 25 mm)

- Fan, Ball-Bearing

701747 3 pin, 3 3/16 x 3 3/16 x 1 in (80 x 80 x 25 mm)

- High quality ceramic bearing

702041 4 pin, 3.1875 x 3.1875 x 1 in (80 x 80 x 25 mm)

- Fan, sleeve

700337 4 pin, 3.625 x 3.625 x 1 in (92 x 92 x 25 mm)

- Fan, sleeve

701655 4 pin, 3.94 x 3.94 x 1 in (120 x 120 x 25 mm)

- Fan, sleeve

702034 3 pin, 3 3/16 x 3 3/16 x 1 in (80 x 80 x 25 mm)



## Bay Mount System Cooler

- Mounts in 5.25" bay
- Cools entire system
- Receives power via 4 pin pass-through connector
- 79 CFM air flow

700573



## Mountable Slot Cooler

- Mounts as a slot bracket
- Cools entire case / system
- Receives power via 4 pin pass-through connector
- 32 CFM air flow

210140



4 Channel Fan Controller

p. 51



SOHO Server

p. 134

## Power Supplies • Mounting Kits



### Power Supply for Cases

- P IV compatible
  - Power cable included
- I66768 ATX, 300 Watt

I68519 ATX, 350 Watt

I66751 ATX, 200 Watt

I73971 ATX, 235 Watt

I73988 ATX, 350 Watt

I74008 ATX, 420 Watt

- Dual fan
  - SATA power cable
- I74015 ATX, 450 Watt



### FDD Mounting Frame

- Universal mounting frame for a 3.5" floppy drive into a 5.25" bay
- Includes mounting hardware

422406 Plastic, Beige

433556 Plastic, Black

423106 Metal, Beige



### HDD Mounting Kit

- Mounting rails for installation of a 3.5" hard drive into a 5.25" bay
- High quality, durable metal rails
- Includes mounting hardware

422475

- 2.5" to 3.5" mounting kit with 40-44 pin adapter

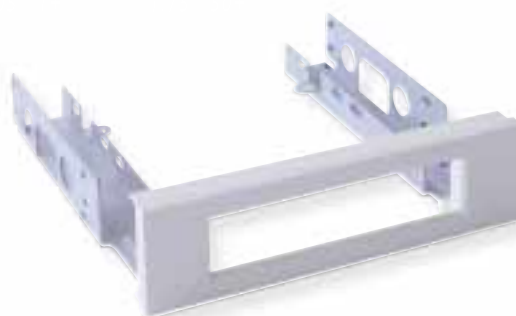
424547



**Screwless ATX Mid Tower**  
p. 49



**Round Floppy Drive Cable**  
p. 66



## Docking Kits

### IDE Docking Kit

- Enables use of alternate hard disks
- Ideal for users needing hard drives in multiple locations, i.e. office and home
- Protects data from unauthorized access
- Installation into any 5.25" bay
- Lockable, 2 keys included
- Mounting hardware included

441223 IDE hard drive docking kit

441209 Extra tray for 441223

450713 Ultra 66 10,000 RPM docking kit, dual fans

450751 Extra tray for 450713

450737 Ultra 133 docking kit, dual fan, Aluminum

450768 Extra tray for 450737



### SATA 150 Docking Kit

- Share one hard drive between multiple PCs
- Remove hard drive for safe storage of sensitive data
- Conveniently replace a defective hard drive
- SATA 150 transfer rate of 1.5 Gbps
- Hot swappable SATA 150 connectors
- Unique shock absorbing system to protect hard drives

451062 SATA, Metal Case

451086 SATA, Plastic Case



**PCI SATA 150 RAID  
Controller Card**  
p. 42



**ATA 100  
Ribbon Cable**  
p. 67





## Power Protection

### Surge Protector for Network

- Modem and fax protection
- Coaxial cable protection - 4 jacks
- 2,840 joules
- 8 outlets, 1 input/2 output phone jacks
- Lighted On/Off reset switch
- EMI / RFI noise filter
- 3 outlets for AC adapters
- Resettable circuit breaker
- Three-line surge protection (hot, neutral, ground)
- Wiring fault and protection LEDs - Red means faulty - Green means OK
- 12 ft. heavy-duty cord
- Right angle plug
- Mounts to wall or other flat surface (Hardware not included)

570848



### Surge Protector for Home Use

- Modem or fax protection
- 750 joules
- 6 outlets, 1 input/1 output phone jack
- Protection indicator LED
- Lighted On/Off reset switch
- EMI / RFI noise filter
- Resettable circuit breaker
- Three-line surge protection (hot, neutral, ground)
- 6 ft. heavy-duty cord
- Mounts to wall or other flat surface (Hardware not included)

570800



### Surge Protector for PC Systems

- Modem or fax protection
- 1,620 joules
- 6 outlets, 1 input/1 output phone jack
- Protection indicator LED
- Lighted On/Off reset switch
- EMI / RFI noise filter
- 2 outlets for AC adapters
- Resettable circuit breaker
- Three-line surge protection (hot, neutral, ground)
- 12 ft. heavy-duty cord
- Mounts to wall or other flat surface (Hardware not included)

570824



**1290**  
JOULES



### Surge Protector for Business

- Modem and fax protection
- 2,720 joules
- 8 Outlets, 1 input /2 output phone jacks
- Lighted On/Off reset switch
- EMI / RFI noise filter
- 3 Outlets for AC adapters
- Resettable circuit breaker
- Three-line surge protection (hot, neutral, ground)
- Wiring fault and protection LEDs - Red means faulty - Green means OK
- 6 ft. heavy-duty cord
- Mounts to wall or other flat surface (Hardware not included)

570831



### Surge Protector for PC Systems

- Modem or fax protection
- 1,290 joules
- 6 outlets, 1 input/1 output phone jack
- Protection indicator LED
- Lighted On/Off reset switch
- EMI / RFI noise filter
- Outlet for AC adapter
- Resettable circuit breaker
- Three-line surge protection (hot, neutral, ground)
- 6 ft. heavy-duty cord
- Mounts to wall or other flat surface (Hardware not included)

570817



**Power Strip Liberator**  
p. 83



**Power Cable**  
p. 71

### Surge Strips

- Integrated circuit breaker switch
- Listed under UL 1363
- 6 outlet 110V

309677 270 Joules

307192 90 Joules

169721 5+3 Surge Protector



### Surge Protector with RJ45 Protection

- DSL/Cable Modem Protection
- Network surge protection
- EMI/RFI noise filter
- 6 Outlets, 1 RJ45 Network Jack
- 270 Joules

167567



### Traveler's Surge Protector with RJ11 Protection

309691 3 MOV Phone/Fax/Modem 270 Joules protection



### Surge Strips

- Six individual lighted rocker switches on front panel
- 15 AMP fuse circuit breaker w/ reset feature
- Master ON/OFF power switch
- Metal housing
- Listed under UL 1363 and 1449

166850 Power Center with Fax/Modem Protection

160025 Power Center with Fax/Modem Protection

### Surge Protector with RJ11 Protection

- Child-safe sliding cover
- Full 3 line surge protection
- EMI/RFI noise filter
- Phone/Fax/Modem protection
- Circuit breaker w/ reset feature
- Listed under UL 487A, 1363 and 1449
- 270 Joules

160001



Wire Tie Straps  
p. 161



Desktop  
5 Port Switch  
p. 131

## Power Protection

### Line-Interactive UPS

- Intelligent Line Interactive
- Lightning and surge protection
- Microprocessor controlled technology
- Automatic Voltage Regulation function (AVR)
- Overload and short-circuit protection
- Smart RS-232 port for software management (Windows 95/98/2000/Me/NT/XP)
- RJ45 Internet surge protection

I72462 400 VA

I72455 600 VA

I72448 800 VA



RJ45 IN/OUT



Smart Interface Port



Protected Power Outputs



UPS Power



Smart Interface Ports



Circuit Breaker



RJ11/RJ45 Protection



Protected Port Output



### Rackmount UPS

- Three interface ports for monitoring multiple servers
- Surge protection for modem/network (RJ11/RJ45)
- Automatic battery backup
- High/Low voltage correction
- Surge Suppression for AC/modem/network
- Smart RS-232 interface port
- \$25,00 Equipment Protection Guarantee
- Six wide-spaced output receptacles
- Re-settable circuit breaker for overload protection
- Free Smart Software included
- Three year warranty

I70192

I400 VA



"MANHATTAN surge protectors allow me to offer business and home users the highest level of protection at a very reasonable cost – and still make a decent buck"

– Grand Rapids, Michigan

SUCCESS STORIES



## Features

- Automatic battery backup
- High/Low voltage correction
- Surge Suppression for AC/Modem/Network
- Smart RS-232 Interface port
- Three Year Warranty
- \$25,000 Equipment Protection Guarantee (US and Canadian orders only)
- Free Smart Software included



### UPS 280 VA

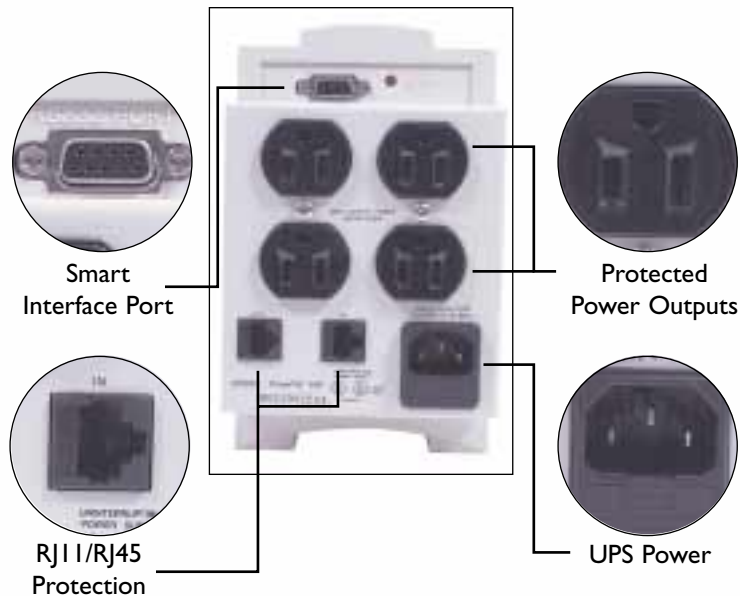
- Rating VA 280
- 170 Watts
- Half Load Runtime of 15 min.
- 2 UPS + RJ11/45 Receptacles
- DB9 Comm Port

I68861

### UPS 425 VA

- Rating VA 425
- 255 Watts
- Half Load Runtime of 25 min.
- 3 UPS + RJ11/45 Receptacles
- DB9 Comm Port

I68878



**Power Strip Liberator**  
p. 83

### UPS 660 VA

- Rating VA 660
- 400 Watts
- Half Load Runtime of 35 min.
- 4 UPS + RJ11/45 Receptacles
- DB9 Comm Port

I68854

### UPS 1000 VA

- Rating VA 1000
- 600 Watts
- Half Load Runtime of 70 min.
- 6 UPS + RJ11/45 Receptacles
- DB9 Comm Port

I66324

### UPS 1400 VA

- Rating VA 1400
- 840 Watts
- Half Load Runtime of 120 min.
- 6 UPS + RJ11/45 Receptacles
- DB9 Comm Port

I68847



**Power Cable**  
p. 71